



上海同济工程咨询有限公司
Shanghai Tongji Engineering Consulting Co., Ltd.

地址：上海市四平路1398号同济联合广场B座3楼、18楼（同济大学四平路校区正门对面）
Address: 3F and 18F Building B, Tongji United Plaza, No. 1398 Siping Road, Shanghai, P.R.C.

电话：+86-21-33626700

传真：+86-21-33626718

邮箱：contact@tongji-ec.com.cn

网址：www.tongji-ec.com.cn



TJEC 同济咨询



上海同济工程咨询有限公司
Shanghai Tongji Engineering Consulting Co., Ltd.



拼搏 · 进取 · 务实 · 创新

Persistent · Progressive · Practical · Pioneering

目录 ▶ CATALOG

P/01 · 公司简介 Company Profile	P/01	公司概况 Company Introduction
	P/03	区域发展 Regional Development
	P/04	业绩版图 Performance Map
	P/07	服务优势 Service Advantages
	P/14	客户类型 Customer Type
	P/14	服务领域 Service Field
P/17 · 服务内容 Service Contents	P/15	服务体系 Service System
	P/17	服务产品 Products
	P/19	典型业绩 Typical Achievements
P/71 · 企业文化 Corporate Culture	P/71	合作交流 Cooperation and Communication
	P/74	员工生活 Staff Activities
	P/75	社会责任 Social Responsibility

公司简介

COMPANY PROFILE

企业愿景

Corporate Vision

成为中国工程领域最具影响力、并享有国际盛誉的综合咨询服务企业

To be the most influential and world-known comprehensive consulting service enterprise in the engineering field of China.

Shanghai Tongji Engineering Consulting Co., Ltd. (hereinafter referred to as "TJEC") is the excellent backbone enterprise of Tongji University and one of the national earliest test units carrying out engineering project management and engineering consultant services. TJEC is the first pioneer enterprise proposing "1+X" whole-process engineering consulting service mode, which always stands on the development frontier in engineering consulting industry.

After the unremitting endeavor for over thirty years, TJEC has owned over ten Grade A certifications or qualifications conferred by many national ministries & commissions and industries depending on the specialty, technology and talent advantages of Tongji University in engineering management, planning, architecture, civil engineering, environment, traffic, machinery, ocean, etc. Its service period covers all links of engineering project from investment intent, project approval, design, construction to operation, service contents involve decision, design, management, technology, information, environment, legal affair, policy and other sections, and the service products mainly include decision consulting, project management and construction agency, design consulting, bidding agency and procurement consulting, engineering construction cost consulting, engineering supervision, third-party evaluation and post-evaluation, technical consulting, information technology application consulting, ecological environment consulting, legal consulting, policy consulting, etc., so as to meet customers' demands in all directions and many fields.

TJEC always adheres to the enterprise mission of "customer satisfaction, employees' self-actualization and social progress as maximum value" and devotes itself to building excellent, outstanding and high-end TJEC service brand in order to make contributions to the development of China's engineering consulting industry and the progress of society.

上海同济工程咨询有限公司（以下简称“同济咨询”）是同济大学优秀骨干企业，是全国最早开展工程项目管理和工程咨询服务的试点单位之一，同时作为首创“1+X”全过程工程咨询服务模式的先驱企业，始终站在工程咨询行业的发展前沿。

经过三十多年的不懈努力，同济咨询依托同济大学在工程管理、规划、建筑、土木、环境、交通、机械、海洋等多学科的专业、技术和人才优势，已具备国家多个部委和行业授予的十余项甲级资质或资格，服务周期涵盖了工程项目从投资意向、立项、设计、建设至运营的各个环节，服务内容涉及决策、设计、管理、技术、信息、环境、法务、政策等版块，服务产品主要包括决策咨询、项目管理与代建、设计咨询、招标代理与采购咨询、工程造价咨询、工程监理、第三方评价与后评估、技术咨询、信息技术应用咨询、生态环境咨询、法律咨询、政策咨询等，可全方位、多领域满足客户所需。

同济咨询始终秉承“以客户的满意、员工的自我实现和社会的进步为最大价值所在”之企业使命，致力于打造优秀、卓越、高端的同济咨询服务品牌，为促进中国工程咨询行业的发展和社会的进步贡献力量。

区域发展

Regional Development

同济咨询立足上海，面向全国，紧跟国家战略部署，开展的业务范围遍布全国30多个省（市）、自治区及海外地区。

TJEC faces the whole country based on Shanghai and closely follows the national strategic deployment. The implemented business spreads over 30 provinces (cities), autonomous regions in the whole country and the overseas regions.

重点区域

Key Areas

长三角地区 Yangtze River Delta Region

巩固企业长三角地区优势地位，高质量服务区域一体化建设

Consolidating the dominant position of enterprise in the Yangtze River Delta region and serving the integrated construction of region with high quality

京津冀地区 Beijing-Tianjin-Hebei Region

以全面参与雄安新区建设为中心，京津冀地区业务协同发展

Centering on the comprehensive participating in the construction of Xiong'an New Area and achieving the coordinated development of the business in Beijing-Tianjin-Hebei region

粤港澳大湾区 Guangdong-Hong Kong-Macao Greater Bay Area

持续拓展大湾区经济带，助力打造超级都市圈

Continuously expanding the economic belt in Greater Bay Area and helping to build super metropolitan area

海南自由贸易港 Hainan Free-trade Port

积极参与海南自由贸易港建设，紧跟国家发展战略

Proactively participating in the construction of Hainan Free-trade Port and closely following national development strategy

华中地区 Central China

开拓华中地区业务范围，发挥全过程工程咨询领航作用

Expanding the business scope in Central China and giving play to the leading role of whole-process engineering consulting

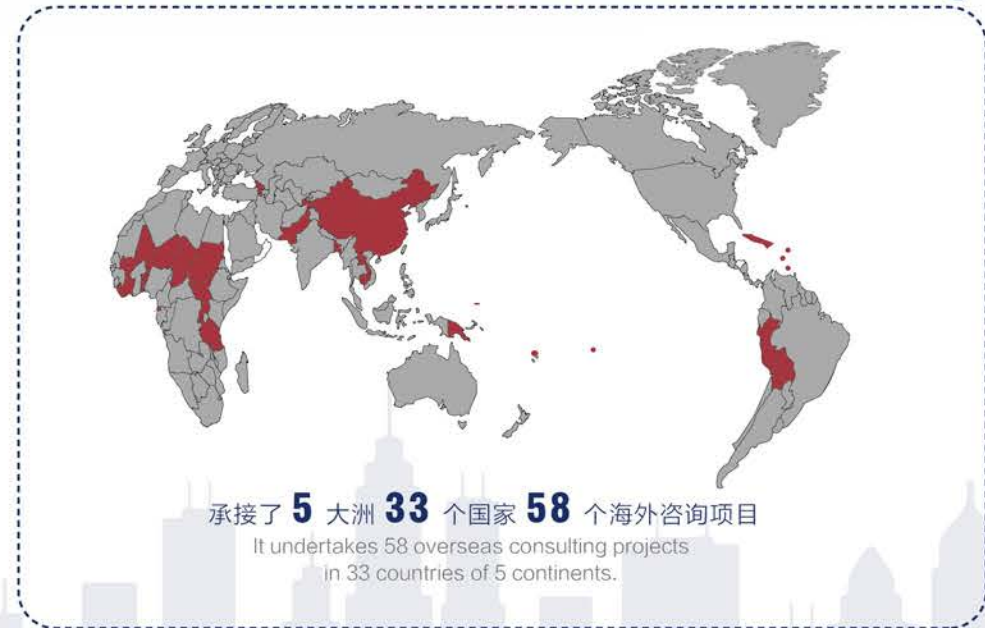
黄河长江流域 Yellow River Basin and Yangtze River Basin

以乌梁素海流域生态保护修复为契机，大力发展生态环境咨询

Seizing the opportunity of ecological protection and restoration of Wuliangsuhai Basin to vigorously develop the ecological environment consulting

业绩版图

Performance Map





雄安新区，未来之城 千年大计，国家大事

同济咨询谋时而动，顺势而为，从规划设计、片区开发、市政设施、民生安置、公服建筑、景观绿化、水利生态、智慧城市等多方面参与雄安新区建设，构建起前期咨询、招标代理、造价咨询、工程管理、生态环境、信息化咨询等多个业务版块。立于未来之城，同济咨询将继续脚踏实地，胸怀未来，共创“雄安质量”。

TJEC seeks opportunities and seizes the momentum to participate in the construction of Xiong'an New Area in planning design, area development, municipal facilities, people's livelihood resettlement, public building, landscape planting, water conservancy ecology, smart city, etc. TJEC also constructs many business sections such as preliminary consulting, bidding agency, construction cost consulting, engineering management, ecological environment, information-based consulting, etc. Based on Future City, TJEC will continuously come down to earth and bear the future in mind to jointly create "Xiong'an Quality".

雄安新区 Xiong'an New Area

- 前期咨询 | Preliminary Consulting**
 雄安新区植树造林项目
 雄东片区A单元安置房及配套设施项目
 唐河河谷郊野公园一期工程项目
 Forest Planting Project in Xiong'an New Area
 Settlement Building and Supporting Facilities Project of Xiongdong Area Unit A
 Phase I Engineering Project of Tanghe River Valley Country Park
- 招标代理 | Bidding Agency**
 雄安自贸试验区综合管理中心项目
 启动区特勤站及一级消防站建设项目
 雄安国际酒店项目
 Integrated Management Center Project of Xiong'an Pilot Free Trade Zone
 Construction Project of Service Station and Grade I Fire Station in Start Zone
 Xiong'an International Hotel Project
- 造价咨询 | Construction Cost Consulting**
 容易线（新区段）公路工程
 容东片区安居工程配套基础设施
 新盖房分洪道堤防加固和治理工程
 Rongyi (New Section) Highway Engineering
 Supporting Infrastructure of Comfortable Housing Project in Rongdong Area
 Dyke Reinforcement and Governance Engineering of Xingtaifang Flood Diversion Channel



- 工程管理 | Engineering Management**
 容东片区内部施工通道工程
 雄安站枢纽片区市政基础设施工程
 容东片区C组团安置房及配套设施项目
 Internal Construction Channel Engineering in Rongdong Area
 Municipal Infrastructure Engineering in Xiong'an Station Hub Area
 Settlement Building and Supporting Facilities Project of Rongdong Area Cluster C
- 生态环境 | Ecological Environment**
 雄安千年秀林景观提升工程
 南拒马河（二期）生态景观提升工程
 萍河左堤防洪治理工程
 Xiong'an Millennium Forest Landscape Promotion Engineering
 (Phase II) Ecological Landscape Promotion Engineering of South Juma River
 Flood Control and Management Engineering of Left Bank of Ping River
- 其他咨询 | Other Consulting Services**
 雄安各片区表土归集、绿色拆除实施方案
 各类建章立制编制服务
 各类专项信息化服务
 Implementation Scheme of Topsoil Collection and Green Demolition in Each Xiong'an Area
 Compilation Service of Various Rules and Systems
 Various Special Information-based Services

服务优势

Service Advantages



同济咨询始终以拓展业务领域、深化产品内涵、提高服务品质为经营宗旨，在工程咨询行业不断拼搏和开拓，经过三十多年的积累，形成了特有的八大核心优势。

TJEC always aims to expand the business field, to deepen product connotation and to improve service quality, and TJEC constantly struggles and expands engineering consulting industry. After accumulation for over thirty years, it forms unique eight core sections.

有力的同济支撑

Strong Support from Tongji University

同济大学始建于1907年，在规划、建筑、土木、工程管理、环境、交通、机械、海洋等学科领域居全国领先地位。校内设立的国家级、省部级实验室核工程研究中心、研究咨询机构达百余个，可提供各类工程技术咨询服务。同济咨询汇集同济大学人才、技术、资源优势，拥有坚实的后盾和强大的支撑力量，着力打造同济大学咨询服务品牌。

Tongji University, established in 1907, occupies the national leading position in the project management, programming, architecture, construction, environment, transportation, machinery, etc. There are more than one hundred national-level and provincial and ministerial-level laboratories, engineering research centers and research consulting institutions in the University, which can provide various engineering and technical consulting services. TJEC collects the talents, technology and resource advantages of Tongji University, and owns solid support and strong supporting strength. It focuses on building consulting service brand of Tongji University.

同济控股

TONGJI INNOVATION & ENTREPRENEURSHIP HOLDINGS CO.,LTD.

同济创新创业控股有限公司作为同济咨询重要股东，使企业将学科链、产业链、创新链深度融合，充分发挥同济大学优势学科和基础研究的溢出效应，坚持科技创新和卓越服务。

Tongji Innovation and Entrepreneurship Holding Co., Ltd., as an important shareholder of TJEC, deeply integrates the subject chain, industry chain and innovation chain, gives full play to the spillover effect of preponderant disciplines and basic research of Tongji University and insists scientific and technological innovation and excellent service.

同济科技

TONGJI SCIENCE & TECHNOLOGY INDUSTRY CO.,LTD.

同济咨询作为同济大学唯一上市公司同济科技的成员，有着更加科学化和规范化的管理要求，同时与同济建设、同济房产、同济环保等众多兄弟公司形成了完整的工程建设产业链。

As the member of the only listed company of Tongji Science & Technology Industry Co., Ltd., TJEC owns more scientific and normalized management requirements; and has formed intact engineering construction industry chain with many branches such as Tongji Construction Co., Ltd., Tongji Property Co., Ltd., Tongji Environmental Engineering Technology Co., Ltd.

同济设计

TONGJI ARCHITECTURAL DESIGN (GROUP) CO.,LTD.

同济大学建筑设计研究院（集团）有限公司作为公司股东和战略合作伙伴，其深厚的工程设计实力与强大的技术咨询能力，为公司的咨询服务品质提供了助力。

TJAD, as the company's shareholder and strategic partner, provides assistance for the Company's consulting service quality with the help of profound engineering design strength and strong technical advisory capacity.



全面的资质资格

Comprehensive Qualification

全面的资质资格，是同济咨询综合实力的体现。多部委、多行业、多专业的企业资质资格，可为客户提供全方位、专业化和个性化的咨询服务。

The comprehensive qualifications reflect the overall strength of TJEC. Large number of qualifications with different disciplines and scopes ensure an all-round, whole-process, and high-quality services for our clients.

- | | |
|--|--|
| <ul style="list-style-type: none"> 工程咨询单位甲级资信 工程造价咨询甲级资质 工程监理甲级资质 工程设计资质 人民防空工程建设监理资质 地质灾害防治单位资质 招标代理与政府采购资格 建设项目环境影响评价资质 | <ul style="list-style-type: none"> Class-A Aptitude of Consulting Engineering Unit Class-A Aptitude of Engineering Cost Consulting Class-A Aptitude of Engineering Supervision Aptitude of Engineering Design Aptitude of Civil Air Defence Construction Supervision Aptitude of Geological Hazard Prevention Qualification of Bidding Agency and Government Procurement Aptitude of Construction Project Environmental Impact Assessment |
| <ul style="list-style-type: none"> 住建部全过程工程咨询试点单位 上海市优秀历史建筑保护修缮监理单位 上海市场地调查评估、治理修复单位 上海市节能量审核机构资格 上海市固定资产投资项目节能评审机构 上海市固定资产投资项目节能评估文件编制机构资格 ... | <ul style="list-style-type: none"> Whole Process of Engineering Consulting Pilot Unit Approved by Ministry of Housing and Urban-Rural Development Shanghai Class-A Aptitude of Conservation Supervision of Excellent Historical Buildings Shanghai Market Investigation and Evaluation, Management and Reconstruction Qualification of Shanghai Energy Saving Audit Institution Shanghai Fixed Assets Investment Project Energy Conservation Accrediting Institute Shanghai Qualification of Fixed Assets Project Investment Skill and Document Compilation Institute ... |



卓越的人才团队

Prominent Service Team

结构合理、经验丰富、行动高效、思维创新的优秀团队，能够充分满足客户需求，提供优质服务。

The excellent team with reasonable structure, rich experience, efficient action and innovative thinking guarantees that the company has the ability to meet the needs of customers fully and provide high-quality services.



资深专家库成员

- 高级项目经理
- 项目前期管理顾问
- 高级投资顾问
- 工程法务顾问
- 项目管理师
- 建设工程风险管理师
- 合同信用管理师
- 项目运营管理顾问
- 企业管理咨询师
- 人力资源管理师
- 物业管理咨询师
- 高级机电顾问

Senior Experts

- Senior Project Managers
- Project Pre-phase Management Consultants
- Senior Investment Consultants
- Engineering Legal Consultants
- Project Managers
- Risk Managers of Construction Project
- Contractual Credit Managers
- Project Operation Management Consultants
- Company Management Consultants
- Human Resource Management Consultants
- Property Management Consultants
- Senior Mechanical and Electrical Consultants

各类国家注册人员

- 咨询工程师（投资）
- 环境影响评价工程师
- 国家注册招标工程师
- 国家注册建筑师
- 国家注册结构工程师
- 国家注册造价工程师
- 国家注册监理工程师
- 国家注册建造师
- 国家注册安全工程师
- 国家注册设备工程师

National Registered Professionals

- National Registered Consulting Engineers(Investment)
- Environmental Impact Assessment Engineers
- National Registered Bidding Engineers
- National Registered Architects
- National Registered Structural Engineers
- National Registered Cost Engineers
- National Registered Supervision Engineers
- National Registered Construction Engineers
- National Registered Safety Engineers
- National Registered Equipment Engineer

员工荣誉

- 中国工程监理大师
- 全国建设工程监理行业优秀专家
- 建造师管理工作优秀专家
- 优秀咨询工程师
- 优秀招标工程师
- 上海市建设功臣
- 上海市优秀项目经理

Staff Honor

- Masters of Engineering Supervision in China
- Excellent Experts of National Construction Engineering Supervision
- Excellent Experts of Construction Management
- Excellent Consulting Engineers
- Excellent Bidding Engineers
- Construction Contributors in Shanghai
- Shanghai Excellent Project Manager

国际专业机构认证专家

- 美国项目管理协会认证的项目管理专家（PMP）
- 英国皇家特许建造师会员（CIOB）
- 英国皇家特许测量师会员（RICS）
- 香港测量师协会会员

Professionals of International Certification Organizations

- Project Management Professionals(PMP)
- Members of Chartered Institute of Building(CIOB)
- Members of Royal Institution of Chartered Surveyors(RICS)
- Members of Hong Kong Institute of Surveyors

科学的管理体系

Scientific Management System

同济咨询遵循规范化、标准化、科学化的管理体系，在业内率先通过ISO 9001:2015质量管理体系、ISO 14001:2015环境管理体系、OHSAS18011:2007职业健康安全管理体系认证，同时建立了完善的内控体系，严格按照工作守则、制度、流程开展咨询工作。

Tongji Consulting follows the normalized, standardized and scientific management system, being the first to pass the ISO9001: 2015 quality management system, ISO14001: 2015 environmental management system and OHSAS18001: 2007 occupational health management system identifications. At the same time, it has established a complete internal control system in strict accordance with work code, system, process to carry out consulting work and dedicated to providing customers with personalized and professional consulting services.



专业的研发能力

Professional Researching and Developing Capability

作为同济大学面向工程咨询行业的产学研平台，公司成立了同济咨询发展研究院，注重将前沿的科学理论研究和工程管理实践有效结合并相互促进，不断研发新的咨询服务产品并应用于项目实践，为工程咨询服务的拓展延伸提供支撑。

As a platform of Tongji University in Industry-University-Research Collaboration, the company established Tongji Consulting Development Research Institute, which pays attention to the effective combination and mutual promotion of cutting-edge scientific research and project management practice, continuously develops new consulting service products and applies them to project practice, provides support for extension of engineering consulting services.



高效的信息化手段

Efficient Informational Approaches

管理信息化

Management Informatization

信息化是咨询企业服务能力提升和创新发展的的重要驱动力之一。公司引进数据治理、流程驱动、统一门户等先进的信息技术手段，搭建了决策管理系统与专业业务系统两大信息化版块，全面提升管理决策水平与工程咨询服务能力水平。

Informatization is one of the important driving forces for the improvement and innovation of consulting enterprises. TJEC introduced data-based, liquidity-driven, unified portal and other advanced technological methods. Tongji establishes the management decision system and professional business system. It improves the level of managerial decision-making and engineering consulting service comprehensively.

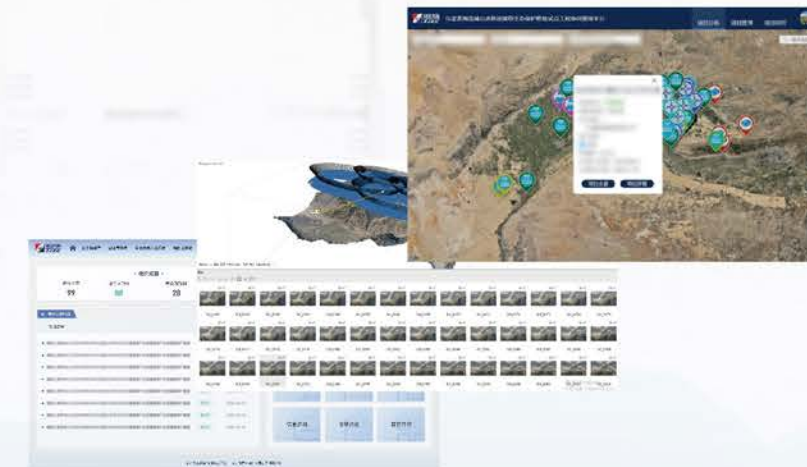


业务信息化

Business Informatization

公司致力于信息化新技术与现代化工程咨询服务技术深度整合的能力建设与研发，拥有多项具有行业领先地位的专项技术解决方案及计算机软件著作权，并已广泛投入实践应用。

We are committed to the capacity building and research development in the deep integration of new information technology and modern engineering consulting service. We also have a number of industry-leading special technology solutions and computer software copyright, which have been widely used in practice.



丰富的实践经验

Rich Practical Experience

公司历年累计承接、完成的各类工程管理及咨询项目达万余项，获得包括国家优秀工程咨询成果奖、鲁班奖、中国市政金奖、詹天佑奖、龙图杯、白玉兰奖等国家及省市级在内的各类奖项达700余项，进一步稳固了公司在行业内的领先地位。

TJEC has accumulatively undertaken more than 10,000 construction projects. Up to now, TJEC has won more than 700 awards including Excellent Engineering Consultation Prize, Luban Prize, State Municipal Golden Prize, Zhan Tianyou Prize, Longtu Cup, Magnolia Award etc., which further maintain the leading position of TJEC in the industry.



客户类型

Customer Category



良好的社会信誉

Excellent Social Reputation

- 全国千家守合同重信用企业
- 上海市守合同重信用AAA企业
- 上海市A类财务会计信用单位
- 上海市A类纳税信用单位

- Thousands of Enterprises Valuing Contract and Credit of China
- Grade AAA Enterprise Valuing Contract and Credit of Shanghai
- Grade A Financial Accounting Credit Enterprise of Shanghai
- Grade A Tax Payment Credit Enterprise of Shanghai

资信等级
CREDIT STATUS



行业认可
INDUSTRY RECOGNITION

- 国际咨询工程师联合会会员
- 中国工程咨询协会常务理事单位
- 中国招标投标协会会员
- 中国建设工程造价管理协会会员
- 中国监理协会理事单位

- Member of International Consulting Engineer Union
- Standing Director Member of Engineering Consulting Association of China
- Member of Bidding Association of China
- Member of Construction Engineering Cost Management Association of China
- Standing Director Member of Supervision Association of China



- 上海市工程咨询行业协会副会长单位
- 上海市建设工程咨询行业协会副会长单位
- 上海市绿色建筑协会会员单位
- 上海市环境科学协会会员单位
- 上海节能服务协会会员单位

- Vice-director Member of Engineering Consulting Industry Association of Shanghai
- Vice-director Member of Construction Engineering Consulting Industry Association of Shanghai
- Member of Green Building Association of Shanghai
- Member of Environmental Science Association of Shanghai
- Director Member of Energy-saving Service Association of Shanghai

服务领域

Service Fields



服务体系

Service System

“1+X” 全过程工程咨询服务体系

“1+X” Whole Process Engineering Consultation Service System

“1+X” 全过程工程咨询内涵

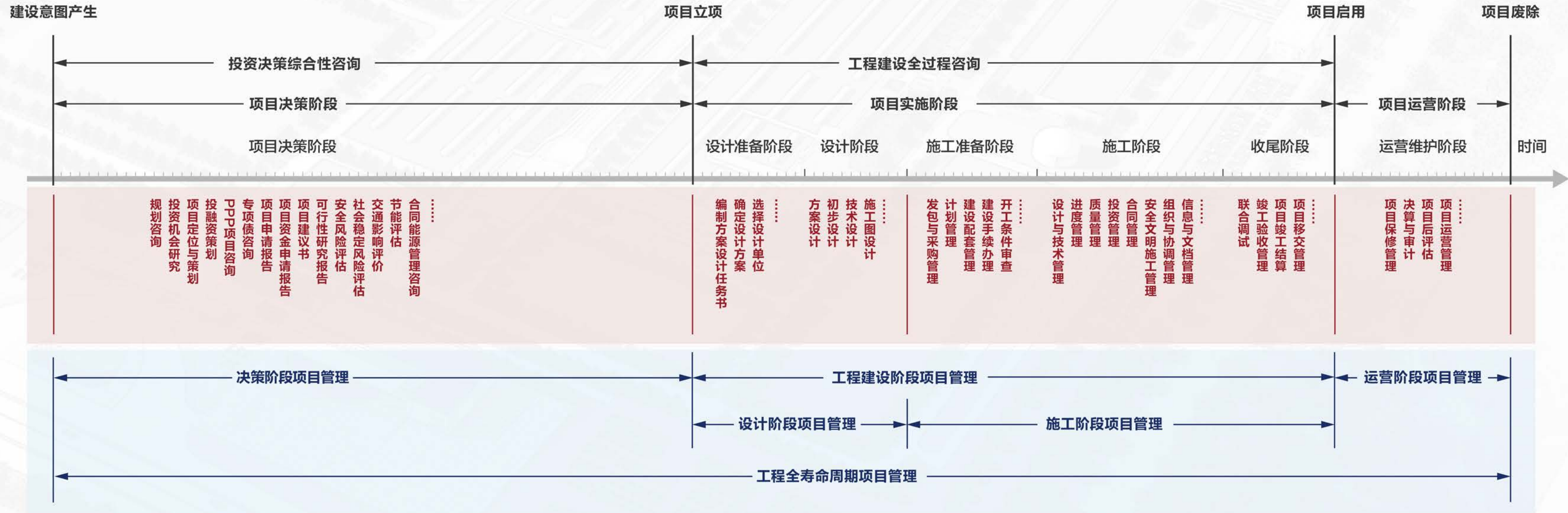
“1+X” whole process - engineering consulting service system

“1”：全过程项目管理咨询服务，可以是决策、实施（设计+施工）、运营的整体或局部管理服务。

“1”：the whole process of project management consulting services, enables to make decisions, implement (design + construction), and to offer overall and specific management services.

“X”：是指全过程工程咨询管理服务中单项工程咨询管理服务，包括投资咨询、勘察、设计、招标采购、监理、造价等，以及其它专项咨询服务，如融资方案、BIM、技术经济方案比较等，可以根据委托方需求和意愿承担其中的一项或多项专业性的工程咨询服务。

“X”：the single project of whole process engineering consulting and management services, including investment consulting, survey, design, bidding and procurement, supervision, and cost, etc., there are also some other services, such as financing scheme, BIM, technical and project comparison, etc. It may undertake one or more of the professional engineering consulting services according to client's needs.



服务内容

SERVICE CONTENTS

忠诚的顾问
最具价值的服务

Faithful Consultant, Most Valuable Service

服务产品

Service Pruducts

全过程工程咨询 (1+X)

Whole-process Engineering Consultation



全过程工程咨询包括全过程（或阶段全过程）的策划、控制和协调工作，可提供决策、设计、施工、运营四个阶段的全生命周期中的单项或单项组合专业工程咨询服务。

The whole-process engineering consultation is to provide engineering consulting services including planning, controlling and coordinating work. It supplies a single or combination of professional engineering consulting services of the whole life cycle that includes decision-making, design, implementation and operation of engineering projects.

八大版块

The Eight Sectors

“X”是全过程工程咨询管理服务中具体的单项专业工程咨询服务，可根据委托方需求和意愿提供八大版块中的任意一项或多项专业工程咨询服务。

“X” refers to the single project consultation management service in the whole-process engineering consultation management service. The consultant can undertake one or more professional engineering consulting services from the eight sectors according to the needs and wishes of the client.



- 规划咨询
Planning Consultation
- 投资机会研究
Investment Opportunity Research
- 项目定位与策划
Project Positioning and Planning
- 投融资咨询
Investment and Financing consultation
- PPP项目咨询
PPP Project Consultation
- 项目建议书
Project Proposal Evaluation
- 可行性研究报告
Feasibility Study Report
- 评估咨询
Evaluation Consultation
-



- 设计策划
Design Planning
- 设计管理
Design Management
- 设计咨询
Design Advisory
-



- 项目代建
Project Agent Construction
- 项目管理
Project Management
- 招标代理与采购咨询
Tendering and Bidding Agency
- 工程造价咨询
Engineering Cost Consultation
- 工程监理
Engineering Supervision
- 第三方评价与后评估
Third-party Evaluation and Post-evaluation
-



- 下穿铁路专项咨询
Underground Railway Special Consultation
- 水土保持专项咨询
Soil and Water Special Consultation
- 地下空间专项技术咨询
Underground Space Special Consultation
- 风险管控专项咨询
Risk Management Special Consultation
-



- BIM技术咨询
BIM Consultation
- 全过程工程咨询信息化平台
Whole Process Engineering Consulting Information Platform
- 无人机专项服务
UAV Special Service
-



- 土壤修复治理咨询
Soil Remediation and Management Consultation
- 环境影响及技术咨询
Environmental Impact Assessment
- 水环境治理咨询
Water Environment Management Consulting
-



- 司法鉴定
Forensic
- 工程法律咨询
Engineering Legal Consultation
-



- 政府咨询
Government Consultation
- 产业咨询
Industrial Consultation
- 行业咨询
Market Consultation
- 企业咨询
Enterprise Consultation
- 标准编制
Standard Preparation
-

全过程工程咨询

WHOLE-PROCESS ENGINEERING CONSULTATION

乌梁素海流域山水林田湖草生态保护修复试点工程 | Pilot Project of Ecological Protection and Restoration of Mountains, Rivers, Forests and Lakes in Wuliangsu Hai Basin

乌梁素海流域山水林田湖草生态保护修复试点工程是国家重点工程，总投资**180亿元**，围绕“山、水、林、田、湖、草、沙”7大生态要素，对乌梁素海流域**1.47万平方公里**的项目区范围实施全流域、系统化治理，共包含**7大类35个子项**。该项目的实施是习近平总书记生态文明思想的重要实践，是助力边疆少数民族地区脱贫致富维护安定团结的重要举措，具有构筑祖国北疆“绿色万里长城”的重要战略意义。

同济咨询作为本项目的全过程工程咨询单位，工作内容包括全过程项目管理、项目前期决策咨询、造价咨询、招标代理、工程监理等服务，在环境领域充分实践了全过程工程咨询管理模式。

The pilot project for ecological protection and restoration of landscapes, forests, fields, lakes and grasses in Wuliangsu Hai Basin is a national key project with a total investment of 18 billion yuan. It focuses on 7 ecological elements of "mountains, water, forests, fields, lakes, grasses, and sand". The project area of square kilometer implements the whole watershed and systematic governance, including 35 sub-items in 7 categories. The implementation of this project is an important practice of General Secretary Xi Jinping's thoughts on ecological civilization. It is an important measure to help the frontier minority areas get rid of poverty and maintain stability and unity. It has important strategic significance to build the "Green Great Wall" in the northern borders of motherland.

As the whole-process engineering consulting unit of this project, Tongji Consulting's work includes services such as whole-process project management, pre-project decision-making consulting, cost consulting, bidding agency, and engineering supervision. It has fully practiced the whole-process engineering consulting.



山 矿山地质环境综合整治工程
Comprehensive Improvement Project of Mine Geological Environment

- 乌拉山北麓铁矿矿区矿山地质环境治理工程
- 乌拉山南侧废弃砂石坑矿山地质环境治理项目
- 乌拉山小庙子沟崩塌、泥石流地质灾害治理工程

- Mine Geological Environment Treatment Project in the Northern Piedmont Iron Mine Area of Wula Mountain
- Geological Environment Treatment Project of Abandoned Sand Pit Mine on the South Side of Wula Mountain
- Geological Hazard Control Project for Collapsed Debris Flow in Xiaomiaozigou, Wula Mountain



水 河湖连通与生物多样性保护工程
Connectivity and Biodiversity Conservation Project of River and Lake

- 九排干人工湿地修复与构建工程
- 乌梁素海生态补水通道工程
- 乌梁素海海堤综合整治工程

- Jiupaigan Artificial Wetland Restoration and Construction Project
- Wuliangsu Hai Ecological Water Supply Channel Project
- Wuliangsu Hai Seawall Comprehensive Improvement Project



林草 水土保持与植被修复工程
Project of Soil and Water Conservation and Restoration

- 乌拉特前旗乌拉山南北麓林业生态修复工程
- 乌梁素海东岸荒漠草原生态修复示范工程
- 湖滨带生态拦污工程

- Forestry Ecological Restoration Construction Project in North and South Foot of Wula Mountain, Urad Front Banner
- Demonstration Project for Ecological Restoration of Desert and Steppe on the East Bank of Wuliangsu Hai Lake
- Lakeside Ecological Pollution Prevention Project



湖 乌梁素海湖水环境保护与修复工程
Wuliangsu Hai Lake Environmental Protection and Restoration Project of Lake

- 东侧湖区湿地治理及湖区水道疏浚工程
- 水生植物资源化综合处理工程
- 乌梁素海湖区底泥处置试验示范工程

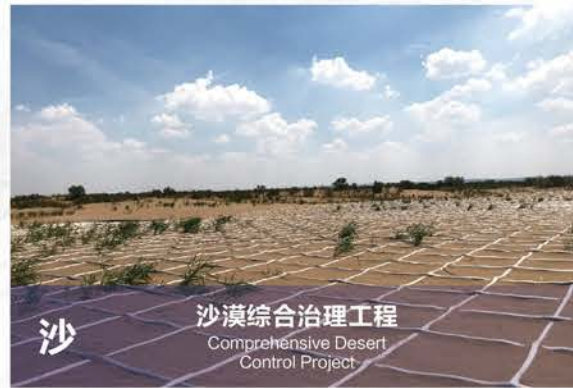
- East Lake Wetland Management and Lake Channel Dredging Project
- Recycled and Comprehensive Treatment Project of Aquatic Plant Resources
- Demonstration Project of Sediment Disposal in Wuliangsu Hai Lake District



田 农田面源及城镇点源污染治理工程
Pollution Control Projects for Fields and Towns

- 农业投入品减排工程
- 耕地质量提升工程
- 农牧业废弃物回收与资源化利用工程

- Emission Reduction Project for Agricultural Inputs
- Project of Cultivated Land Quality Improvement
- Agricultural and Grazing Waste Recycling and Resource Utilization Project



沙 沙漠综合治理工程
Comprehensive Desert Control Project

- 乌兰布和沙漠防沙治沙示范工程
- 乌兰布和沙漠生态修复示范工程

- Demonstration Project of Sand Prevention and Control in Ulan Buhe Desert
- Ecological Restoration Demonstration Project in Ulan Buhe Desert

天津于家堡金融区项目群 | Tianjin Yujiaapu Financial District Project Group



中国商用飞机 (C919) 能力建设项目群 | COMAC (C919) Capacity Building Project Group



中国商飞总装制造中心
COMAC Manufacturing Center of China

中国商飞客服支援中心及技术交流中心
COMAC Customer Service Support and Technical Communication Center



兖州百项工程项目群 | Yanzhou Hundred Engineering Project Group

兖州市“百项工程”涵盖了7大类109项，绝大多数是破解兖州城市发展瓶颈的基础性、关键性工程和事关城区民生改善的公共性、服务性工程。“百项工程”项目实施是兖州市城市规划建设史上规模最大、投资最多、影响力最强的壮举。项目的实施对于强力支撑和拉动兖州今后较长一个时期的科学发展、跨越发展，大大提升兖州的城市功能、品位、形象，增强城市的辐射力、凝聚力，彻底改善当地的人居生产、生活环境都具有重大的意义。

"Hundred Project Group" of Yanzhou covers 109 projects of 7 categories, most of which are basic projects to break the bottleneck of Urban development of Yanzhou. The implementation of "100 Projects" is the largest, most invested and most influential feat in the history of Urban planning and construction in Yanzhou. The implementation of the project is of great significance of Yanzhou for a long period in the future, which also greatly enhances the urban function, image and meanings to the development of Yanzhou.



兖州人民医院
Yanzhou People's Hospital



兖州体育中心
Yanzhou Sports Center



兖州怡和花园
Yanzhou Yihe Park



兖州兴隆文化园
Yanzhou Xinglong Cultural Garden Construction Project



兖州锦绣家园
Yanzhou Jinxiu Community



兖州旧关片区拆迁安置房
Yanzhou Former Site Relocation House

南京河西新城项目群 | Nanjing Hexi New City Group Project



上海迪士尼度假区项目群 | Resort Hotel Group Project in Shanghai Disney

决策咨询

DECISION-MAKING
CONSULTATION



遵循“客观性、针对性、合规性”的原则，根据客户的需求，通过全方位地调查、分析和论证，编制高质量的研究、策划和评估报告。

Based on the demand of clients, TJEC has systematically analyzed the information of investment projects, so that a high-quality research, planning or assessment report can be compiled due to the principle of "objectivity, pertinence and legalization".

服务内容涵盖 Service Contents



申能集团工业地块规划定位项目
Industrial Land Planning and Positioning Project of Shenenergy Group



徐圩新区总体规划 (2008-2030)
Public Services Infrastructure in Xuwei District

规划咨询 | Planning Consultation

根据国家的方针、政策和法规，对项目、专项和区域的发展目标、规模以及相应的步骤和措施等进行设计、部署和安排，提供针对项目、专项和区域发展规划的编制、咨询服务。

According to the national policy and regulation, we proceed design, deployment and arrangement on the development goal, scale and the corresponding procedures and measures of a project or an region, as well as development planning and consultation services.



遂宁龙凤古镇
Suining Longfeng Ancient Town



贵州兴义物流中心
Guizhou Xingyi Logistics Center

投资机会研究 | Investment Opportunity Study

- 兰州至中川机场铁路项目
Lanzhou-Zhongchuan Airport Railway Project
- 衡阳市城区智慧停车管理系统和公共停车场项目
Hengyang Intelligent Parking Management System and Public Parking Project
- 苏州市姑苏区2019-GW-1号地块项目
Suzhou Gusu No.2019-GW-1 Plot Project
- 新江湾城23-5地块商办项目
Xinjiangwan Cheng 23-4 Commercial Project



项目定位与策划 | Project Business Plan

为政府、开发商、投资者等提供区域或项目市场研究、综合定位、产业规划、投资策划、产品策划、招商策划、营销策划、运营策划等咨询服务，涵盖片区开发、园区建设、商业地产、旅游地产、养老地产等各类领域。

TJEC has offered consulting services to the government, developers and investors, including project marketing research, integrated positioning, industry planning, investment planning, products planning, marketing planning, operational planning and so on, which have covered areas of development, park construction, commercial real estate, tourism, endowment real estate, etc.

开远市七星湖片区产业策划
Industry Orientation of Qinghu District, Kalyuan

广陵公共文化中心
Guangling Public Cultural Center

连云港“一带一路”国际执法安全合作能力建设与发展中心
"One Belt And One Road" International Law Enforcement and Security Cooperation

温岭文化中心项目
Wenling Cultural Center Project



PPP项目咨询 | PPP Project Consultation

为政府和社会资本方提供项目发起、识别、准备、采购和执行等各阶段的PPP全过程咨询服务，涵盖投融资、财务、政策、法律、管理和技术等方面。主要咨询成果包括项目实施方案、物有所值评价报告、财政承受能力论证报告、合同文件、采购文件、尽职调查报告、市场测试报告等。

PPP project consultation has offered services for the government and society, such as establishment, identification, preparation, purchasing and implementation process of project and so on, which has covered investment, policy, law, management and technology. Our consulting results have mainly included project implementation plans, value evaluation reports, financial capacity arguments, contract documents, procurement files, due diligence reports, market test reports, etc.

台州市椒江区绿色药都特色小镇建设项目
Construction Project of Characteristic Green Medicine Town in Taizhou Jiaojiang

南马镇西区污水处理厂一期改造扩建工程PPP项目
PPP Project of Phase I Reconstruction and Expansion Project, West Narma Town

台州市飞龙湖生态区PPP项目
Feilong Lake Biome PPP Project

浙江省诸暨市妇幼保健院易地新建PPP项目
PPP Project of Maternity and Child Care Hospital, Zhuji, Zhejiang Province



专项债咨询 | Special Bond Issuance Preparation Consultation

协助地方政府制订三年内基础设施、公共服务领域投融资资金综合平衡方案；对政府专项债券发行的立项、申报、项目梳理进行指导，提供专业的意见和合理的建议；对政府专项债券发行的申报方案进行指导、审核，提供专业的意见和合理的建议；对专项债实施方案及信息披露相关文件进行指导、审核，提供专业的意见和合理的建议。

Assist local governments in formulating a comprehensive balance plan for investment and financing funds in the infrastructure and public service areas within three years; provide guidance on the establishment, declaration, and project organization of government special bond issuance; provide professional opinions and reasonable suggestions; provide guidance and review of the application report related to the special government bond issuance; offer guidance and review of the special debt implementation plan and disclosure documents of relevant information and provide professional opinions and reasonable suggestions.

投融资咨询 | Investment and Financing Consultation

大目湾新城开发项目
Development Project of Damu Bay New City

雄安新区金融岛开发建设投融资咨询项目
Xiongan Financial Island Development Investment and Financing Consultation

上海市虹口区17街坊旧区改造项目
17 Jiefang Old District Reconstruction Project in Hongkou District, Shanghai

南京市六合区龙袍新城“四新”建设项目
"Sixin" Construction Project of Longpao New Town, Liuhe District, Nanjing



宿州市高新区半导体产业园项目
Semiconductor Industrial Project, Suzhou Gaoxin District

亳州市城南水厂工程
Chengnan Water Engineering Project, Haozhou

马鞍山市博望区人民医院
People's Hospital Project, Bowang District, Maanshan

芜湖县湾沚南站配套设施项目
South Station Facilities Project, Wuhu Wanzhi

宿州高新区云计算产业数据中心
Cloud Computing Industry Data Center, Suzhou Gaoxin District



项目申请报告编制与评估 | Compilation and Assessment of Project Application Report

- 上海市普陀区政府区级机关大楼一号楼、六号楼
Building One and Six of Government Office in Putuo, Shanghai
- 上海静安区黄山路保障房二期
Phase II Security Housing of Huangshan Road in Jing'an, Shanghai
- 上海市嘉定工业区地块动迁安置房项目
Resettlement Housing Projects of Industrial Areas in Jiading, Shanghai
- 上海天安漕宝路地块养老项目
Pension Program of Tian'an Caobao Road, Shanghai

可行性研究报告编制与评估 | Feasibility Study Report Compilation and Assessment



上海月星环球商业中心
Shanghai Yuexing Global Business Center



武汉大学人民医院洪山区建设项目
People's Hospital Construction Project in Hongshan District of Wuhan University



上海越剧艺术演艺传习中心新建工程
New Construction Project of Shanghai Yue Opera Art Center

项目资金申请报告 | Project and Investment Application Report

上海建滔广场 ▶
Shanghai Jiantao Plaza

安徽九州通现代医药物流中心项目
Jointown Modern Pharmaceutical Logistics Center Project, Anhui

滴水湖南岛游艇俱乐部新建项目
The New Project for the Yacht Club in Dishui Lake South Island

上海众联能创新能源科技有限公司海南新能源车项目
Hainan NEV project of Shanghai Zhonglian Energy Innovative Technology Co., Ltd.



初步设计评估 | Preliminary Design Assessment

- 湖北省中医药研究院中医药研究中心大楼建设项目
Building Construction Project of Traditional Chinese Medicine Research Center of Hubei Provincial Hospital of TCM
- 普陀区苏州河岸线公园（一期）项目
Phase I Project of Suzhou River Park, Putuo
- 崇明三星第二敬老院建设工程
Construction Engineering of the Second 3 Stars Nursing Home in Chongming
- 奉贤区公安消防支队扩建工程
Expansion Project of Public Security Fire Detachment in Fengxian

项目建议书编制与评估 | Project Proposal Compilation and Assessment

- 上海交响乐团迁建工程
Relocated Project of Shanghai Symphony Orchestra
- 光明田缘生态农业田园综合体
Guangming Tianyuan Ecological Agriculture Synthesis
- 援非盟会议中心、援老挝国际会议中心等11个援建项目
A Series of Aid Construction Projects including Aid African Union Conference Center, Aid Laos Conference Center, etc.
- 中国红河无人驾驶未来小镇、成都丝绸饮食文化产业新城等特色小镇项目
Featured Town Projects like China Honghe Future Town of Driver-less, Chengdu New Town of Silk Food Culture Industry





安全风险评估 | Safety Risk Assessment

南昌轨道交通4号线
Nanchang Metro Line 4

节能减排与合同能源管理咨询 | Energy-saving and Emission-reduction Consultation

立足国家有关节能政策与规划，通过对项目使用能源种类、数量及其输送、转化、消耗体系等的分析，评价项目能效水平，为项目建设单位优化设计方案、进一步降低能耗提供参考意见。

We devoted ourselves to providing the optimization design plan to further reduce energy consumption for the project owner, based on the relevant policies and the analysis of the energy resources, quantity, transmission, transformation and consumption system.



上海国际舞蹈中心项目
Shanghai International Dance Center Project

社会稳定风险评估 | Social Stability Risk Assessment

对可能影响社会稳定的因素开展系统的调查，科学的预测、分析和评估，制定风险应对策略和预案，有效规避、预防、控制重大事项实施过程中可能产生的社会稳定风险，确保项目顺利实施。

TJEC has started with systematical investigation on the potential factors that may affect social stability, and then conduct prediction, analysis and assessment on the specific factors in a scientific way, eventually make risk response strategies and plans to effectively avoid, prevent and control the social stability risks that may arise during the implementation of significant matters to ensure the success of the project.



无锡恒隆广场（二期）
Wuxi Hanglung Plaza (Phase II)

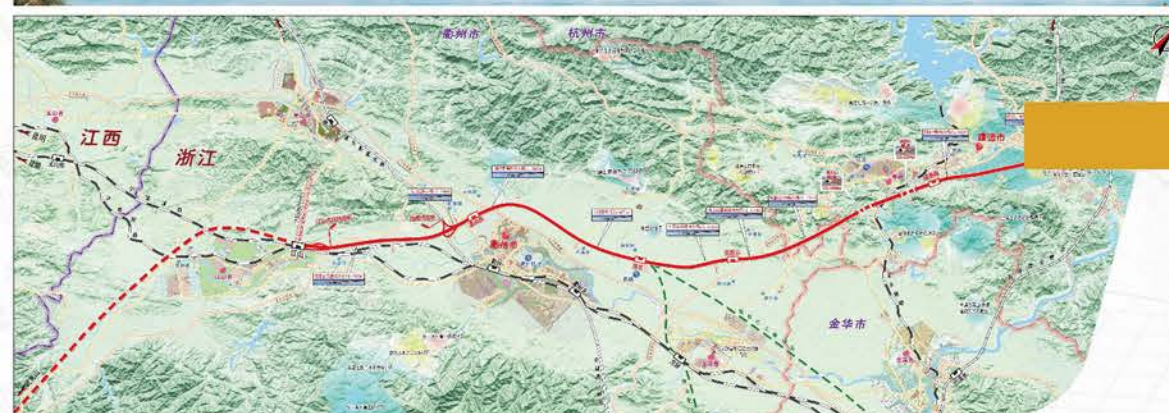


海尚名都三期项目
Phase III of Haishang Mingdu



元祖梦世界
Yuanzu Dream World

新建杭衢铁路（建衢段）线路平纵断面示意图



交通影响评价 | Traffic Impact Assessment

杭州至衢州铁路（建德至衢州段）
接轨沪昆客专江山站工程
Hangzhou-Quzhou Railway (Jiande-Quzhou Section)
Shanghai-Kunming Passenger Dedicated Jiangshan
Station Connection Project

项目管理与代建

DECISION-MAKING
CONSULTATION

运用科学的理念、程序和方法，采用信息化、现代化的管理手段，使工程项目的管理科学化、规范化和专业化，为客户带来最大的增值效益。根据工程项目建设的需求和特点，可为客户量身打造覆盖前期策划决策阶段、建设准备阶段、建设实施阶段和运营评价阶段的全过程或阶段性项目管理服务。

TJEC makes the project management scientific, standardized and professional to bring the greatest added value effect for customers by using scientific ideas, procedures, methods, information and modern management methods. According to the needs and characteristics of engineering project construction, the whole process or stage project management service can be customized for customers, covering the early decision-making stage, construction preparation stage, construction implementation stage and operation evaluation stage.

服务内容涵盖 Service Contents



医疗检测类 | Medical Detection Buildings

- 常州市妇幼保健院、常州市第一人民医院钟楼院区
Changzhou Maternal and Child Care Service Center, and Bell Tower Branch of the First People's Hospital
- 邹城市人民医院新城医院
New Town Branch of Zoucheng People's Hospital
- 厦门市第二医院总部扩建工程
Expansion Project of Xiamen Second Hospital Headquarter
- 上海市检测中心浦东基地一期工程
Pudong Base of Shanghai Testing Centre Phase 1
- 上海质量检验公共服务平台质检综合实验基地
Comprehensive Experimental Base of Shanghai Quality Inspection Public Service Platform
- 深圳市医疗器械检测和生物医药安全评价中心
Shenzhen Medical Device Detection and Biological Medicine Safety Evaluation Centre
- 深圳市药品检验研究院光明分院
Guangming Branch of Shenzhen Institute of Drug Testing and Research



商务办公类 | Commercial Office Buildings

- 襄阳大厦
Xiangyang Mansion
- 无锡丽悦商务园区
Wuxi Liyue Business Park
- 沛县新城区写字楼
Office Building of New Urban District in Pei County
- 上海合作组织国际司法-交流合作培训基地
The SCO International Judicial Exchange and Cooperation Training Base

信息科技类 | Information Science-technology Buildings

中国移动上海公司临港IDC数据中心（一期工程） ▶
Shanghai Lingang IDC Project (Phase I) of China Mobile Company

携程信息技术大楼
Ctrip Information Technology Mansion

中电科信息科技大厦
Information Technology Mansion of CETC

潍坊软件园A、B楼
Building A and B of Weifang Software Park

华测导航总部基地项目
Headquarters Base Project of Huace Navigation



文化旅游类 | Cultural Tourism Buildings

上音歌剧院 ▶
Shanghai Opera House

黄山幸福新世界养生度假项目
Huangshan Happy New World Health Resort Project

武汉市首义广场
Shouyi Square, Wuhan

上海市总工会沪东工人文化宫（分部）
Reconstruction Project of Hudong Worker's Cultural Palace (Branch) for Shanghai Federation of Trade Union

下花园区鸡鸣山景区综合开发项目
Comprehensive Development Project of Jiming Mountain Scenic Area in Xiahuyuan District



金融服务类 | Financial Service Buildings

交通银行金融服务中心（扬州）
Financial Service Center of Bank of Communications in Yangzhou

交通银行省级营业大楼（福建、贵州、河北、山西、宁夏、内蒙古等）
Series of Office Provincial Buildings of Bank of Communications (Fujian, Guizhou, Hebei, Shanxi, Ningxia, Inner Mongolia, etc.)

金砖国家开发银行过渡办公室
Series of Office Provincial Buildings of Bank of Communications (Fujian, Guizhou, Hebei, Shanxi, Ningxia, Neimengku, etc.)

新开发银行总部大楼
The New Development Bank Headquarters Building

盐业银行大楼
Yien Yieh Commercial Bank



工业厂房类 | Industrial Factory Buildings

泰州抗体药物产业化建设项目新建厂区建设工程
New Factory Construction Project of Taizhou Antibody Drug Industrialization Project

浙江中烟工业有限公司杭州卷烟厂易地技术改造二期工程
Technical Innovation Project (Phase II) of Hangzhou Tobacco Factory of Zhejiang Zhongyan Industrial Co., Ltd.

湖北中烟襄阳易地技改项目
Xiangyang Technical Renovation Project of Hubei Tobacco

徐州市荆马河污水处理厂三期扩建工程
Phase III Expansion Project about Sewage Treatment Plant in Xuzhou Jingma River

上海发那科机器人有限公司厂房建设工程
Plant Construction Project of Shanghai Fanuc Robot Co., LTD



汽车类 | Automobile

一汽-大众汽车有限公司整车制造厂建设项目
Manufacturing Plant Construction Project of Finished Automobile of FAW-Volkswagen

汽车4S店建设项目
Series of Construction Project of Automobile 4S Stores

梅赛德斯-奔驰经销商系列项目 ▶
Mercedes-Benz Dealerships

捷豹路虎经销商系列项目
Jaguar Land Rover Dealerships

雷克萨斯经销商系列项目
Lexus Dealerships

沃尔沃经销商系列项目
Volvo Dealerships

戴姆勒经销商系列项目
Daimler Dealerships

克莱斯勒经销商系列项目
Chrysler Dealerships



装修改造类 | Decoration and Renovation Buildings

雄安设计中心 ▶
Xiongan Design Center

上海烟草集团有限责任公司营销中心改造工程
Technical Innovation Project of Marketing Center of Shanghai Tobacco Group Co., Ltd

上海海德公馆装修改造工程
Decoration and Renovation Project of Shanghai Hyde Villa

鼎世大厦装修工程
Decoration Project of MRD Building

杭州万象城尚泰百货室内装修工程
Interior Decoration Project of Central Department Store in Hangzhou MIXC



福利教育类 | Welfare and Educational Buildings

复旦大学江湾校区一号交叉科研楼
No. 1 Cross Scientific Research Building of Jiangwan Campus of Fudan University

解放路小学综合楼翻建工程
Complex Building Renovation Project of Jiefang Road Primary School

金桥敬老院建设工程
Construction Project of Jinqiao Gerocomium

上海奉贤区拓林福利院改扩建工程
Renovation and Expansion Project of Tuolin Welfare House in Fengxian, Shanghai

上海奉贤区福利院修缮工程
Remedial Project of Welfare House in Fengxian, Shanghai



住宅类 | Residences

河北云顶丽苑房地产项目（密苑滑雪公寓）
Series of Construction Project of Automobile 4S Stores

西藏亚东县上亚东乡灾后重建整体搬迁安置项目
Overall Relocation and Settlement Project of Post-disaster Reconstruction in Shangyadong Township, Yadong County, Tibet

上海奉贤区四团镇锦港佳苑三期动迁安置房项目
Relocation Project of Jingang Jiayuan (Phase III) in Sitan Town, Fengxian District

上海文翔路一号、二号动迁安置配套房项目
Relocation Project of Wenxiang Road (No.1 and No.2)



公路与市政工程类 | Highways and Municipal Engineering

鄱阳湖生态科技城芳兰湿地公园等建设项目 ▶
Construction Project of Fanglan Lake Wetland Park of Poyang Lake Ecological Science and Technology City

南通经济技术开发区通启运河大桥
Tongqi Canal Bridge Project of Nantong Economic Technology Development Zone

张江中区系列道路工程
Series of Road Projects of Zhangjiang Central District



设计咨询

DESIGN
CONSULTATION

采用平行的专业团队模式，坚持“设计创造价值、创意改变生活”的理念，本着博取众长、精心研究的工作态度，努力为客户提供高质量、全方位的设计咨询服务。

Adopting parallel professional team mode, and insisting the concept of "design creates value and creativity changes life" to strive to provide high-quality and all-around design consulting services for customers in line with the work attitude of gaining the advantages of others and careful study.

服务内容涵盖 Service Contents



上海东方肝胆外科医院安亭院区工程
Shanghai Eastern Hepatobiliary Surgery Hospital Anting Branch Engineering



一汽-大众汽车有限公司整车制造厂建设项目（天津）
Manufacturing Plant Construction Project of Finished Automobile of FAW-Volkswagen (Tianjin)



一汽-大众汽车有限公司整车制造厂建设项目（青岛）
Manufacturing Plant Construction Project of Finished Automobile of FAW-Volkswagen (Qingdao)



兴业银行大厦
Industrial Bank Building



兖州兴隆文化园
Yanzhou Xinglong Cultural Park



临港先进制造园C03-04、C04-02地块项目
Lingang Advanced Manufacturing C03-04 and C04-02 Project

招标代理与采购咨询

BIDDING AND
PROCUREMENT AGENCY



恪守“公开、公平、公正、诚实信用”原则，坚持从客户需求出发，针对不同的建设项目特点，策划制定采购与招投标的实施方案，凭借严格的招标与采购程序，选择出在资格、能力、资信、价格等方面都能最大限度满足客户和项目建设实际需要的承包商和供应商。同济咨询不仅重视招标及采购策划与具体实施，还特别关注中标单位合同履行中的实际表现，以此快速更新服务，提高服务水平。

Based on the principle of "Open, Justice, Equity and Honesty", TJEC has aimed at different features of construction projects to establish reasonable scope of bidding and procurement, and has selected the contractors and suppliers who can meet the actual demands of customers and projects to the greatest extent in the qualification, ability, credit, price, etc. by virtue of strict bidding and procurement procedures. TJEC not only attaches importance to the planning and specific implementation of bid invitation and procurement, but also pays special attention to the actual performance of bid-winning unit in fulfillment of contract to rapidly update service and improve service level.

服务内容涵盖 Service Contents

工程类招标代理
与采购咨询

Engineering Bidding
Agency and Procurement
Consulting

服务类招标代理
与采购咨询

Service Bidding Agency
and Procurement
Consulting

货物类招标代理
与采购咨询

Goods Bidding Agency and
Procurement Consulting

.....

城市综合体类 | Urban Complex



- ◀ 上港滨江城总体开发建设项目
Overall Development and Construction Project of SIPG Binjiang City
- 嘉定总部园区设计勘察项目
Survey and Design Project of Jiading Headquarters Park
- 新江湾城C5地块综合开发项目
Comprehensive Development Project of
New Jiangwan City Plot C5

住宅类 | Residences

宝山区罗店镇11街坊P1地块商业项目 ▶
Baoshan District Luodian Town Block 11 Plot P 1
Commercial Project

上海大华颐和华城建设项目
Construction Project of Shanghai Dahua Yihe

中远宝山新城9#地块项目
Plot 9 of COSCO Baoshan New City



文化旅游类 | Cultural Tourism Buildings

◀ 海南文昌铜鼓岭国际生态旅游区海石滩项目
Haishitan Project of International Ecological Tourist Area in
Wenchang TongGu Mountain, Hainan

上海航天博物馆建设工程
Construction Project of Shanghai Aerospace Museum

宝山西城区北块绿龙中央公园项目
Lvlong Central Park Project in Baoshan Xicheng District North Block





研发培训类 | Research and Development Buildings

- ◀ 上海广联工程设备研发生产及检测基地
R&D Production and Testing Base of Shanghai Guanglian Engineering Equipment
- 浦东软件园三期工程
Pudong Software Park (Phase III)
- 闵行国际智慧城项目
Minhang International Intelligence City Project
- 新建上海紫竹新兴产业技术研究院一期项目
Newborn Industry Technology Research Institute of Shanghai Zizhu (Phase I)

公共医疗类 | Public Medical Buildings

- ▶ 复旦大学附属上海市第五人民医院新建外科综合大楼
Surgical Comprehensive Building of the Fifth People's Hospital of Shanghai Fudan University
- 上海闵行区中心医院
Shanghai Minhang Central Hospital
- 上海交通大学医学院附属仁济医院
Renji Affiliated Hospital of Shanghai Jiaotong University School



商务办公类 | Commercial Office Buildings

- ▶ 上海新伟商务大厦项目
Shanghai Xinwei Commercial Building Project
- 上海华电大厦项目
Shanghai Huadian Building Project
- 徽商银行总部基地建设项目
Construction Project of Huishang Bank Headquarter Base
- 上海隆视投资有限公司建设项目
Construction Project of Shanghai Longshi Investment Co., Ltd



教育类 | Education

- ◀ 同济大学嘉定校区工程教育及科创中心
Engineering Education and Science and Technology Innovation Center of Jiading Campus of Tongji University
- 上海交通大学九期学生公寓
Phase IX Student Dormitory of Shanghai Jiao Tong University



公路与市政工程类 | Highways and Municipal Engineering

- ▶ 绍兴市镜湖新区一期路网及桥梁工程
Road-net and Bridge Engineering (Phase I) of Jinghu New District in Shaoxing
- 2015年上海徐汇区绿化养护项目
Shanghai Xuhui District Greening Maintenance Project in 2015
- 重固镇赵重公路东侧地块项目（一期、二期）配套绿化工程
Assistant Afforest Engineering (Phase I and II) of Eastern Plot of Zhaozhong Road in Zhonggu Town



工业厂房类 | Industrial Factory Buildings

- ◀ 上海西北物流园区保税物流中心有限公司仓储施工项目
Construction Project of Bonded Logistics Center Co., Ltd in Shanghai Northwest Logistics Park
- 上海浦江粮食仓库改扩建工程
Reconstruction and Extension Project of Shanghai Pujiang Grain Barn
- 曹杨工业园区北地块
North Plot of Caoyang Industrial Park



工程造价咨询

ENGINEERING COST
CONSULTATION

以增值理念为核心，通过深入广泛的调查，分析同类项目的市场信息，结合同济咨询二十多年积累的工程数据和同济建筑设计研究院的设计数据，充分运用价值工程、挣值法等科学手段，力求项目每分投入都能获得更高的价值。

TJEC centers on the appreciation concept to analyze the market information of similar projects through deep and wide survey, and strives to obtain the maximum value of project in each investment with full use of Value Engineering, Earned Value Method, etc. TJEC also combines the engineering data accumulated for over twenty years and the design data of Architectural Design & Research Institute of Tongji University.

服务内容涵盖 Service Contents



城市综合体类 | Urban Complex

- 徐汇滨江湘芒果项目
Jiangxiang Mango Project of Xuhui Binjiang
- 重庆万科商业项目及悦峰三期
Vanke Commercial Project and Yuefeng Phase III in Chongqing
- 协信上海虹桥综合体项目
Shanghai Hongqiao Projects of Xiexin Group



商务办公类 | Commercial Office Buildings

- 协信集团总部城项目
Headquarters Projects of Xiexin Group
- 上海佳程广场商办楼项目
Shanghai Jiesheng Square Commercial Office Building Project
- 万科虹桥商务区核心区北片区11号地块项目
North Core Area Plot 11 Project in Vanke Hongqiao Business District
- 上海龙湖松江新城商办项目
Songjiang New City Commercial Projects of Shanghai Longhu



住宅类 | Residences

- 万科张江东地块、白马花园、重固、松江梦想派、徐泾、临港项目
Vanke Zhangjiang East Plot, Baima Garden, Chonggu, Songjiang Mengxiangpai, Xujing and Lingang Project
- 首创杨浦平凉路项目
Shouchuang Pingliang Road Project in Yangpu
- 上海招商大场项目
China Merchants Field Project in Shanghai
- 上海保利临港NNW-C4C-02地块项目
Plot NNW-C4C-02 in Poly Lingang, Shanghai
- 上海金地新桥项目
Shanghai Gemdale New Bridge Project





研发培训类 | Research and Development Buildings

- ◀ 上海微小卫星工程中心卫星研制项目
Satellite Development Project of Shanghai Micro Satellite Engineering Center
- 东软上海研发中心（一期）
Shanghai Neusoft Research and Development Center (Phase I)
- 东航技术应用研究中心
Technology Research Center of China Eastern Airlines

公路与市政工程类 | Highways and Municipal Engineering

- ▶ 湖南衡邵高速公路工程
Hunan Hengshao Expressway Project
- 上海市中环线虹梅路立交工程
Hongmei Road Interchange Project of Shanghai Middle Ring
- 广州市内环路工程
Guangzhou Inner Loop Project
- 江湾体育场站地下空间开发项目
Underground Space Development Project of Jiangwan Stadium Subway Station
- 黄浦江越江设施运营养护工程
Operating Maintenance Project of Huangpu River Adopting Facilities

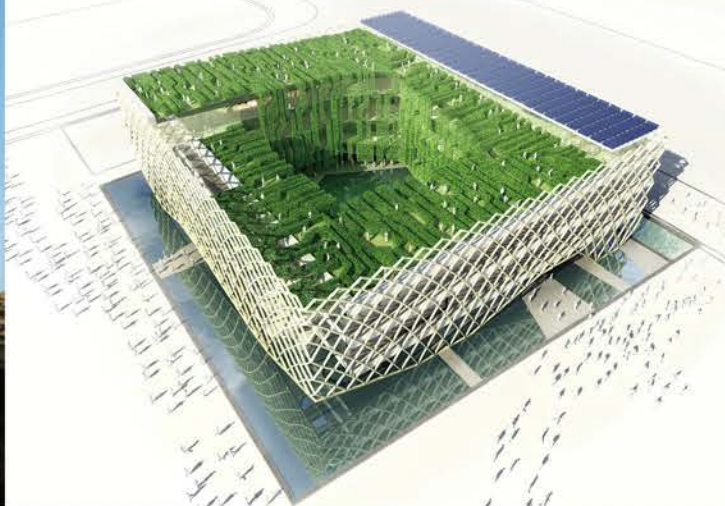
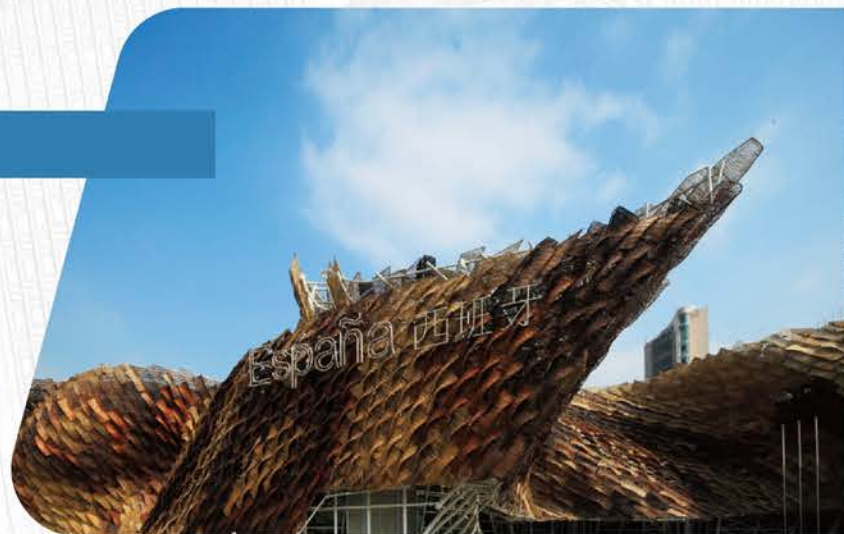


文化旅游类 | Cultural Tourism Buildings

2010年中国上海世博会展馆项目 (法国馆、丹麦馆、西班牙馆)

Pavilion Projects of 2010 Shanghai World Expo (France Pavilion, Denmark Pavilion and Spain Pavilion)

上海真如寺大雄宝殿维修工程 Maintenance Project of Shanghai Zhenru Temple



工业厂房类 | Industrial Factory Buildings

- ◀ 江苏沃德化工有限公司新厂区建设工程
New Factory Construction Project of Jiangsu World Chemical Industry Co., Ltd.
- 青岛太平洋货柜冷链集装箱生产制造项目
Container Cold Chain Container Manufacturing Project of Pacific in Qingdao
- ▼ 天合光能东南及东北区建设项目
Construction Project of Southeast and Northeast Areas of Trina Solar Energy



教育类 | Educational Buildings

- ◀ 北大培文国际学校
PKU Peiwe International School
- 中侨学院金山校区一期、二期工程
Jinshan Campus (Phase I and II) of Zhongqiao College
- 三亚航空旅游学院新校区
New Campus of Sanya Aviation and Tourism College



工程监理

ENGINEERING SUPERVISION



坚持“守法、诚信、公正、科学”的宗旨，贯彻优质服务理念，为业主提供规范化的监理服务。服务期从施工准备期开始，经施工、安装调试、竣工验收等阶段，直至项目保修期结束为止，通过“三控、两管、一协调”，确保高质量实现项目目标。

Following the objective of "Legalization, Honesty, Equity and Scientificity", TJEC has aimed to provide standardized supervision services. Service contents have contained successive stages from preparation installation to final acceptance of construction projects. Also, TJEC has emphasized the principle of "Three Control, Two Management and One Coordination", so that the project goals could be reached.

服务内容涵盖 Service Contents



文化旅游类 | Cultural Tourism Buildings

- 上海迪士尼度假区——探险岛建设工程
Adventure Island and Dream World of Shanghai Disneyland Resort
- 日喀则市宗山城堡博物馆
Shigatse Zongshan Castle Museum
- 三亚凤凰山国际旅游度假区一期——三亚凤凰梦幻水上世界
Sanya Phoenix Water Park in Sanya Phoenix International Tourist Resort Phase I



城市综合体类 | Urban Complex

- 南通赛格时代广场项目
SEG Times Square in Nantong
- 三亚中铁月川项目
China Railway Project in Yuechuan, Sanya
- 静安寺交通枢纽及商业开发项目
Transportation Junction and Business Development Project of Jing'an Temple



住宅类 | Residences

- 雄安新区容东片区C组团安置房及配套项目
Xiongan New Area Rongdong Area Group C Resettlement Housing and Supporting Facility Project
- 虹桥上海城住宅项目
Hongqiao Shanghai City Residential Project



商业酒店类 | Merchant Hotels

- 三亚太阳湾高级度假区及海富酒店工程
Sanya Sun Bay Senior Resort and Haifu Hotel
- 三亚海棠湾亚特兰蒂斯酒店及水上公园项目
Sanya Haitang Bay Atlantis Hotel and Water Park
- 外滩SOHO项目
SOHO Project in the Bund



商务办公类 | Commercial Office Buildings

- 南京德基广场一期、二期工程 ▶
Nanjing Deji Plaza (Phase I and II)
- 文新综合印务中心工程项目
Wenxin Comprehensive Printing Center Engineering Project
- 上海虹桥新地中心项目
Shanghai Hongqiao Xindi Center
- 世茂国际广场及东扩工程
Shimao International Plaza and Eastern Extension Project



工业厂房类 | Industrial Factory Buildings

- 中航翔凤国际物流(上海)有限公司一期项目
AVIC International Logistics (Shanghai) Co., Ltd. Phase I
- 中船长兴岛造船基地一期工程
Changxing Island Shipbuilding Base of CSSC (Phase I)

场馆类 | Stadiums

- 厦门工人体育馆工程 ▶
Xiamen Workers' Stadium



教育类 | Educational Buildings

- 复旦大学光华楼项目 ▶
Fudan University Guanghua Building Project
- 上海松江大学园区共享教育资源区一期工程
Shared District for Educational Resource of Shanghai Songjiang University
- 中国资本市场学院建设工程
Construction Project of China Capital Market Institute



公共医疗类 | Public Medical Buildings

- 国家肝癌科学中心工程 ▶
The National Center for Science in Hepatocellular Carcinoma Project
- 兖州市人民医院新院工程
New Hospital Project of Yanzhou People's Hospital
- 第二军医大学第三附属医院安亭院区工程
Anting Branch of the Third Affiliated Hospital of the Second Military Medical University



公路与市政工程类 | Highways and Municipal Engineering

- 佛山市东平大桥、大福路南延道路工程
Southward Extension Road Project from Foshan Dongping Bridge to Dafu Road
- 嘉闵高架路(北翟路-G2)及地面道路新建工程
Construction Project of Jiemin Elevated Highway and Surface Road (Beizhai Road-G2)
- 杨浦大桥浦西主塔及浦西引桥
Puxi Main Tower and Puxi Approach Bridge of Yangpu Bridge
- 上海轨道交通系列工程
Shanghai Rail Transit Series Engineering



研发培训类 | Research and Development Buildings

- 欧姆龙上海研究·开发·协创中心项目
Omron Shanghai R&D Collaborative Innovation Center Project
- 上海紫竹数字创意港项目
Shanghai Zizhu Digital Creative Harbour Project
- 士齐生物研发中心第一期工程
Shiqi Biological Research and Development Center Phase I



航空航天类 | Aerospace

- 海口美兰国际机场二期扩建航站楼工程 ▶
Terminal Extension Project of Haikou Meilan International Airport Phase II
- 上海浦东国际机场飞行区工程
Airfield Project of Shanghai Pudong International Airport



第三方评价与后评估

THIRD-PARTY EVALUATION AND POST ASSESSMENT



质量检查与后评估 | Quality Inspection and Post Assessment

华润置地住宅工程项目
Residential Projects of China Resources Land Co., Ltd

通过独立的第三方视角，结合丰富的工程技术和管理经验，力求客观真实地分析项目的社会和经济效益，评价项目的实现程度和持续能力，以期帮助业主在管理和技术两方面获得提升。

By an independent third-party perspective, and combining with rich experience in engineering technology and management, TJEC has devoted to analyzing social and economic value of projects, which helped clients get promoted and upgraded in terms of management and technology.

服务内容涵盖 Service Contents

第三方实测实量
Government Consultation

第三方管理评价
Industry Consultation

第三方后评估
Enterprise Consultation

TIS风险管理
TIS Risk Management

.....

管理评估咨询 | Management Evaluation Consultation

常州天合光能有限公司东南区工程
Southeast District Engineering of Changzhou
Trina Solar Energy Co., Ltd.



后评价报告 | Post Assessment

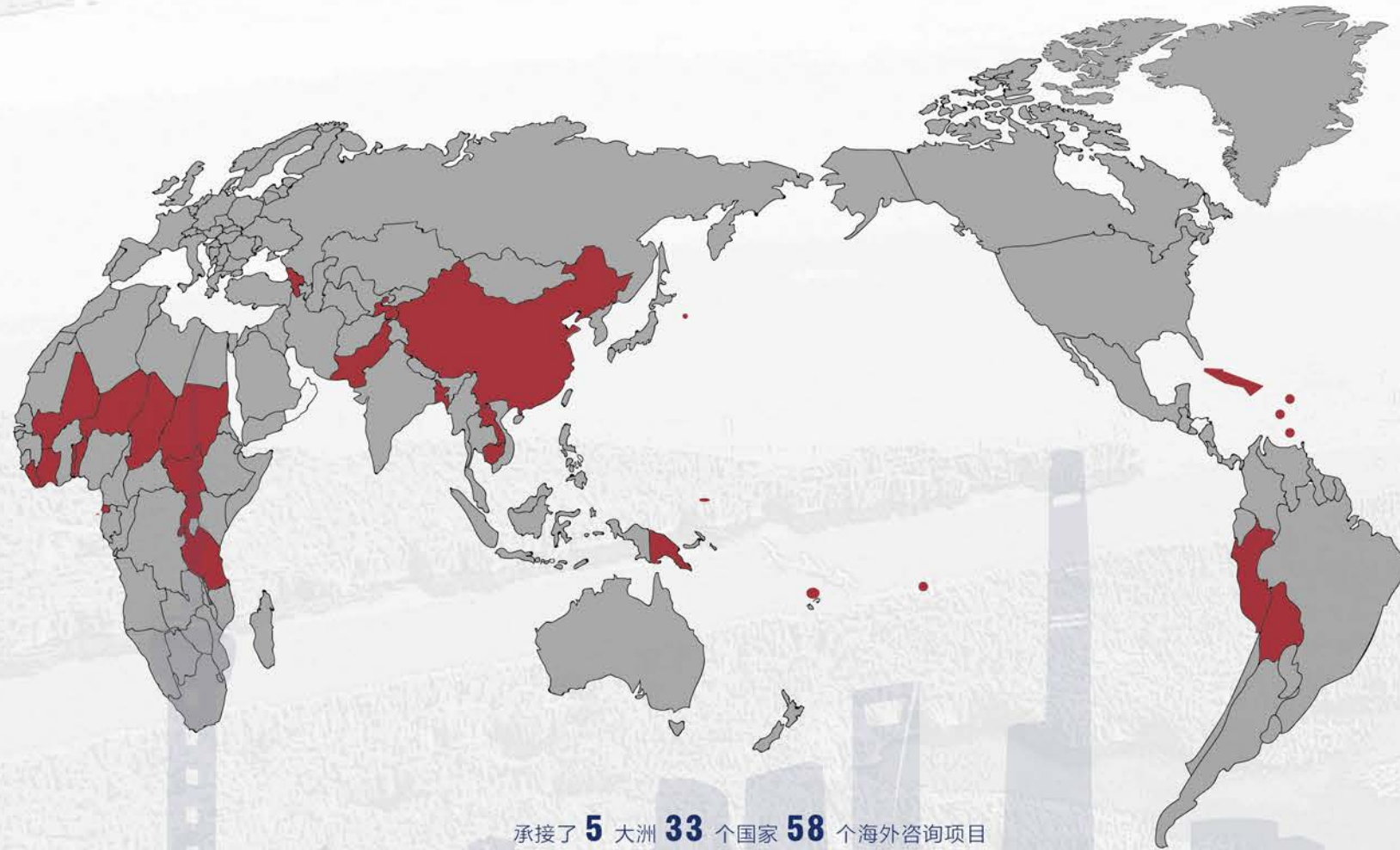
上海张江集电港一期40#、41#工程
Plot 40 and 41 of Shanghai Zhangjiang Riverfront Phase I



TIS风险管理 | TIS Risk Management

项目技术风险管理TIS (Technical Inspection Service) 是指质量风险管理机构运用一系列技术风险管理方案和手段, 在项目决策阶段、设计阶段、招投标阶段、施工阶段、竣工阶段、运营阶段的项目全过程寿命周期中, 对项目潜在的质量安全风险因素进行辨识、评估、预警、控制, 以促进工程质量的提高, 避免质量安全事故发生, 降低工程出现质量安全事故的风险概率, 减少工程的风险损失程度, 提高项目业主及投保人的满意度。TIS风险管理业务范围包括职业责任保险PIL (Professional Liability Insurance)、工程质量缺陷保险IDI (Inherent Defect Insurance), 以及项目全过程全寿命周期WLC (Whole Life Cycle) 的质量安全风险技术咨询与风险管理服务。

Technical Inspection Service (TIS) of project means that Quality Risk Management Institution applies a series of technology risk management schemes and methods to identify, evaluate, predict warning and control the potential quality safety risk factors in the whole-process service life cycle including project decision stage, design stage, bidding and tendering stage, construction stage, completion stage and operation stage. The aim of TIS is to promote the improvement of engineering quality, to avoid the quality safety accident, to reduce the probability of quality safety accident risk of engineering, to reduce the risk loss degree of engineering, and to improve the satisfaction of project owners and insurance applicants. The risk management business scope of TIS includes the Professional Liability Insurance (PI), Inherent Defect Insurance (IDI) of engineering and the quality safety risk technology consulting and risk management service of the whole life cycle.



承接了 **5** 大洲 **33** 个国家 **58** 个海外咨询项目
It undertakes 58 overseas consulting projects
in 33 countries of 5 continents.



援某国体育场项目
Project Helping Stadium in A Country



援某国国际会议中心项目
Project Helping International Convention Center in A Country



援某国孔子学院项目
Project Helping the Confucius Institute in A Country



援某国精英学校项目
Project Helping Elite School in A Country

技术咨询

TECHNOLOGY
CONSULTATION



基于同济咨询自身的专家委员会，同时依托同济大学及同济产业各兄弟公司强大的技术、人才、专业支撑，以“满足客户利益与项目功能合理需求”为宗旨，着力开发新技术、新方法，充分发挥先进的技术优势，提供专业的技术咨询与管理服务。

Based on our own experts' committee, strong support of technology, talents and professions from Tongji University, and group companies of Tongji companies of Tongji Industry, TJEC has devoted to developing new technologies and methods to meet the demand of clients' benefits and project functions. Also, TJEC has always tried best to make sure the project design reasonable, applicable, professional and economical friendly.

服务内容涵盖 Service Contents



下穿铁路技术咨询 | Underpass Railway Technology Consultation

累计完成400余项下穿铁路工程专项技术咨询
A total of more than 400 special technical consultations for underpass railway have been completed.

水土保持专项咨询 | Special Consulting on Conservation of Water and Soil

- 崇明生态城镇海天路工程 ▶
Haitian Road Engineering in Chongming Ecological Town
- 崇明区陈家镇水厂二期工程
Phase II Engineering Project of Water Plant in Chenjia Town Chongming District
- 金汇镇资福村农林水土复垦项目
Farming, Forestry, Water and Land Recultivated Project in Zifu Village Jinhui Town
- 长兴岛北兴动迁安置房项目
Resettlement House Project of North Changxing Island
- 新建滨江规划路工程
New Binjiang Planning Engineering



风险管控专项技术咨询
Risk Control Technology Consulting



上海卢浦大桥
Shanghai Lupu Bridge

信息技术应用咨询

INFORMATION TECHNOLOGY
CONSULTATION

同济咨询致力于为企业及政府提供信息化技术咨询和系统研发服务。基于建筑信息模型（BIM）、无人机（UAV）、物联网（IoT）、大数据、云计算等技术，借助地理信息系统（GIS）、全过程工程咨询信息化平台等工具，围绕建设工程项目全生命周期，为客户提供BIM技术咨询、无人机专项服务、全过程工程咨询信息化平台研发、智慧城市建设及其他信息化技术咨询解决方案。

Tongji Consulting's Information Technology Application and Consulting Department are committed to providing enterprises and governments with information technology consulting and system research and development services. Based on building information model (BIM), unmanned aerial vehicle (UAV), Internet of Things (IoT), big data, cloud computing and other technologies. With the help of geographic information system (GIS), full-process engineering consulting information platform and other tools, we can provide customers with BIM technical consulting, UAV special services, R & D of the entire process engineering consulting information platform, smart city construction and other information technology consulting service solutions around the entire life cycle of the project.

服务内容涵盖 Service Contents



BIM应用与咨询 | BIM Application and Consultatio

以建筑信息模型（BIM）为核心，采用智能化与数字化的方式来表示建筑构件，结合地理信息系统（GIS）等工具和技术，向工程项目的开发和管理方提供贯穿建筑全生命周期的信息化工程建设与建筑运营的管理服务，并通过建立以BIM模型为载体的项目管理信息化平台，大大提升项目管理效率，减少设计变更和返工，提高项目建设质量。

With building information model (BIM) as the core, intelligent and digital representation of building components, combination of tools and technologies such as geographic information system (GIS), we provide project development and management parties with information construction and construction operation management that are throughout the entire life cycle of the building Management services. Also, by establishing a project management information platform using the BIM model as a carrier, it greatly improves project management efficiency, reduces design changes and rework, and improves project construction quality.



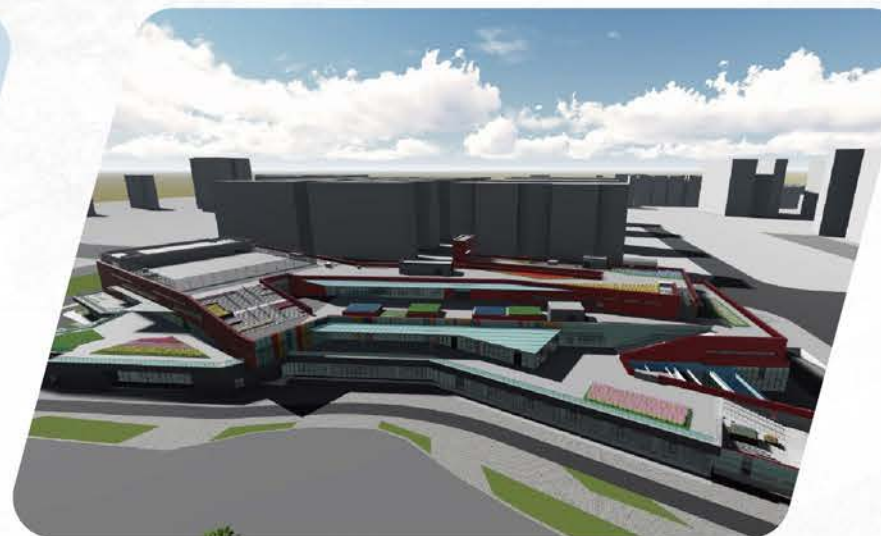
川沙体育场征地改扩建项目
Land Acquisition and Reconstruction
Project of Chuansha Stadium



海南三亚湾假日酒店改扩建项目
Hainan Sanya Bay Holiday Hotel Reconstruction and Expansion Project



上海吴淞口国际邮轮码头
船舶交通管理中心项目
Vessel Traffic Management Center Project
of Shanghai Wujiaochang International Cruise
Terminal



无锡市太湖新城（和畅片区）睦邻中心项目
Wuxi Taihu New Town (Hechang Area) Good-neighborly Center Project



同济大学嘉定校区新建工程教育及科创中心项目
New Engineering, Education and Science and Technology Innovation
Center Project of Tongji University Jiading Campus

无人机专项服务 | Drone-specific Services

利用无人机(即利用无线电遥控设备和自备的程序控制装置操纵的不载人飞机)及其配套相关技术,提供项目实景模型、720°全景等多种可视化交付成果。同济咨询天眼计划开展以来,对无人机在建筑工程、环境保护、交通管理等多方面多领域,结合BIM、GIS、全景漫游、VR等技术进行了深入挖掘,并培养了一批优质飞行员,为多类工程项目提供前沿优质的咨询服务。

Unmanned aerial vehicles (that is, unmanned aircraft controlled by radio remote control equipment and self-provided program control devices) and related supporting technologies were utilized to provide various visual deliverables such as project real-life models and 720° panoramas. Since the launch of the Tongji Consulting Tianyan plan, it has conducted in-depth excavations of drones in construction engineering, environmental protection, traffic management and other fields, combining the deepening research of BIM, GIS, panoramic roaming, and VR technology. At the same time, a group of high-quality pilots has been trained. Above progress, all provides cutting-edge and high-quality consulting services for many types of engineering projects.

上海大学生体育中心体育馆项目
Shanghai University Student Sports Center Gymnasium Project

铜仁市退耕还林植被统计项目
Vegetation Statistics Project of Returning Farmland to Forest in Tongren City

中国移动上海临港IDC数据中心项目
China Mobile Shanghai Lingang IDC Data Center Project

南芦公路桥项目
Nanlu Highway Bridge Project



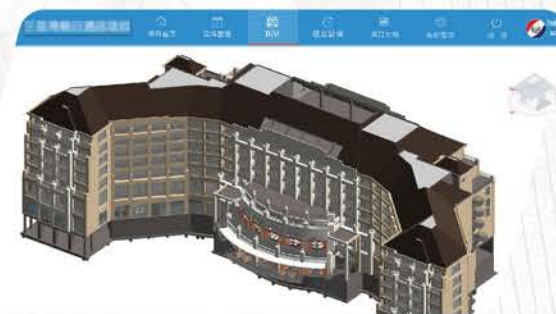
九江芳兰湖生态科技城项目无人机直播
Drone Live Broadcasting of Jiujiang Fanglan Lake Ecological Science and Technology City Project

武汉襄阳大厦项目
Wuhan Xiangyang Building Project

全过程工程咨询信息化平台 | The Whole Process Engineering Consulting Information Platform

提供贯穿项目全生命周期的协同管理平台,以优化工程项目管理流程及效率为目标,集成AI人工智能、BIM轻量化、实景模型、GIS等技术,覆盖项目的可研、评估、设计、施工和项目运维等全过程,有效提高项目质量、安全和进度等管理质量,实现工程项目管理的标准化、流程化、智能化全过程管控。

Providing a collaborative management platform throughout the entire life cycle of the project, aiming at optimizing the engineering project management process and efficiency, integrating AI artificial intelligence, BIM lightweighting, real-world models, GIS and other technologies, covering the feasibility, evaluation, design, construction and maintenance of the project, effectively improve the management quality of project quality, safety and schedule, and realize the standardization, process and intelligence of the project process management.



BIM轻量化协同管理平台
BIM Lightweight Collaborative Management Platform



智慧运维管理平台
Smart Operation and Maintenance Management Platform



定制化项目群管理平台
Customized Project Group Management Platform

智慧城市建设 | Big Data Consultation

将新一代信息技术充分运用在城市建设中,通过系统与服务的集成实现城市信息化高级形态。基于物联网(IoT)、大数据、云计算、射频识别(RFID)等信息化技术手段,充分整合城市资源,实现对城市的精细化与智能化管理。

The new generation of information technology will be fully used in urban construction, and the advanced form of urban informatization will be realized through the integration of systems and services. Based on information technology such as the Internet of Things (IoT), big data, cloud computing, and radio frequency identification (RFID), the city's resources are fully integrated to achieve refined and intelligent management of the city.



智慧建设城市顶层方案咨询
Consultation on the Top Plan of Smart Construction City



智慧城市建设规划方案咨询
Consulting on Smart City Construction Planning Solutions



智慧城市建设行动方案咨询
Consulting on Smart City Construction Action Plan

其他信息化咨询服务 | Other Information Consulting Services

信息系统可行性研究
Information System Feasibility Study

包括信息系统项目的必要性、建设目标、主要内容、技术方案、时间计划、投资估算以及风险评估等完整可行性方案研究。

Including the necessity of the information system project, construction goals, main content, technical scheme, time plan, investment estimation, and risk assessment, etc.

信息系统审价咨询
Information System Price Consultation

基于丰富的信息系统项目经验,对信息系统报价的合理性与合法性情况进行审查与评估,并给出参考价格和意见。

Based on rich experience in information system projects, review and evaluate the rationality and legality of information system quotes, and provide reference prices and opinions.

信息系统实施监理
Information System Implementation Supervision

依据合同条款规定对信息系统建设过程实施监理,保证系统建设符合相关合同条款与法律规范的质量要求。

Supervise the information system construction process in accordance with the provisions of the contract to ensure that the system construction meets the quality requirements of relevant contract terms and legal norms.

信息化方案咨询
Informatization Program Consulting

帮助政府和企业实现项目管理周期一体化、业务集成一体化、各参建方多方协同一体化的信息化管理方案。

Help the government and enterprises to realize the integration of project management cycle, business integration and integration of various parties involved in the construction of information management solutions.

生态环境咨询

ENVIRONMENTAL
CONSULTATION

环境影响及技术咨询 | Environmental Impact and Technical Consultation

同济咨询积极探索创新环境领域咨询服务模式，秉承“严谨，求实，团结，创新”的精神服务社会，坚持“绿水青山就是金山银山”的生态理念，依托丰富的专家、技术和人才资源，为客户提供“一站式”、“全方位”、“全过程”的环保咨询服务。

Tongji Consulting actively explores the consulting service model in the field of innovative environment, adhering to the spirit of "rigorous, realistic, united, and innovative" of Tongji University, serving the society, adhering to the ecological concept of "green mountains are golden mountains and silver mountains", relying on the rich expertise of Tongji University And human resources, to provide customers with "one-stop", "omnidirectional" and "whole process" environmental protection consulting services.

服务内容涵盖 Service Contents



中科大量子中心项目
Zhongke Quantum Center Project

玻璃幕墙光反射影响评价 | Evaluation of Reflection Effect of Glass Curtain Wall

交通银行新同城数据中心项目
New Urban Data Center Project of Bank of Communications



竣工环保验收 | Environmental Acceptance on Completion

华侨城-新建商业(度假酒店、宾馆)用房项目
New Commercial (Resort and Guesthouse) Housing Project



环保管家服务 | Green Housekeeping Service

骨科医疗器械研发产业中心一期工程
Phase I Project of Orthopedic Medical Device
R&D Industrial Center



环境监理 | Environmental Supervision

杨浦区平凉路街道58街坊P2丘地块修复工程
Restoration Project of P2 Mound Block, Block 58, Pingliang
Road, Yangpu District



VOCs减排 | Emission Reduction of VOCs

中冶（上海）钢结构科技有限公司VOCs综合治理项目
Zhongye (Shanghai) VOCs Treatment Project of Steel Structure Technology Co., LTD



水环境治理咨询 | Water Environment Management Consultation

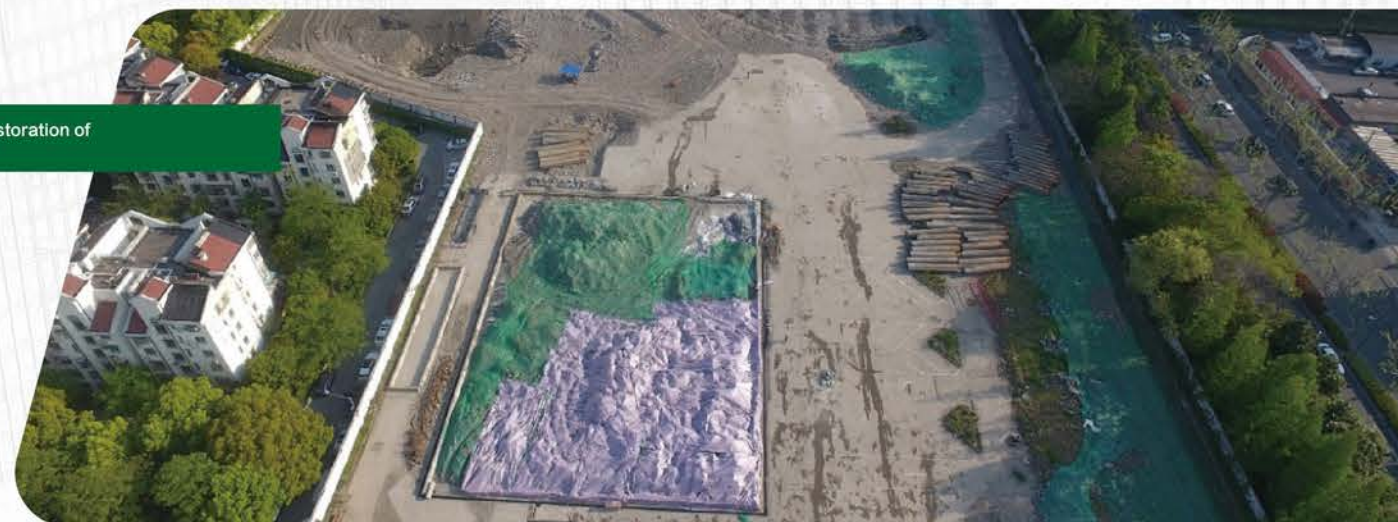
平湖市上海塘（新埭段）“一河一策”治理
Governance of "One River and A Slip" on the Seawall, Pinghu
嘉善县关风港、大云市河、花神庵港、
堰桥港等系列河港治理项目
Series River Port Projects



污染场地评估与修复 | Assessment and Restoration of Contaminated Sites

上海市虹口区广中社区N080601、N080602单元
059-02地块污染场地修复工程

Restoration Project of Contaminated Site in Lot 059-02, Units
N080601 and N080602, Guangzhong Community, Hongkou District,
Shanghai



环境规划 | Environmental Planning

介休市水污染防治总体规划
General Plan for Water Pollution Prevention and Control, Jiexiu

晋中市灵石县水污染防治总体规划
Water Pollution Prevention and Controlling, Lingshi County, Jinzhong



法律咨询

LEGAL CONSULTING



以“工程+法律”为发展思路，结合多年工程实践经验，形成了涵盖事前、事中、事后的法律咨询产品，可为政府机关、工程类企业及工程项目等提供建设工程领域的各类法律咨询服务。

Taking "engineering + law" as the development idea and combining with years of practical experience in engineering, the company has formed a legal consulting product covering pre-event, in-event and post-event, which can provide various legal consulting services in the field of construction engineering for government agencies, engineering enterprises and engineering projects.

服务内容涵盖 Service Contents



上海市杨浦区合生国际广场NS-1地块和292地块工程
Construction Cost, Construction Period, and Loss of Shutdown of the NS-1 and 292 Plots of Shanghai Hesheng International Plaza, Yangpu District, Shanghai



闵行区浦江镇122-5#商办地块建设项目
122-5# Commercial Land Plot Construction Project Scaffolding Engineering Review



贵州凯里斗牛城旅游综合体项目工程
Tourism Complex Project, Kaili, Guizhou



贵阳市天河潭景区提升建设项目
Tianhetan Scenic Spot Enhancement Construction Project, Guizhou

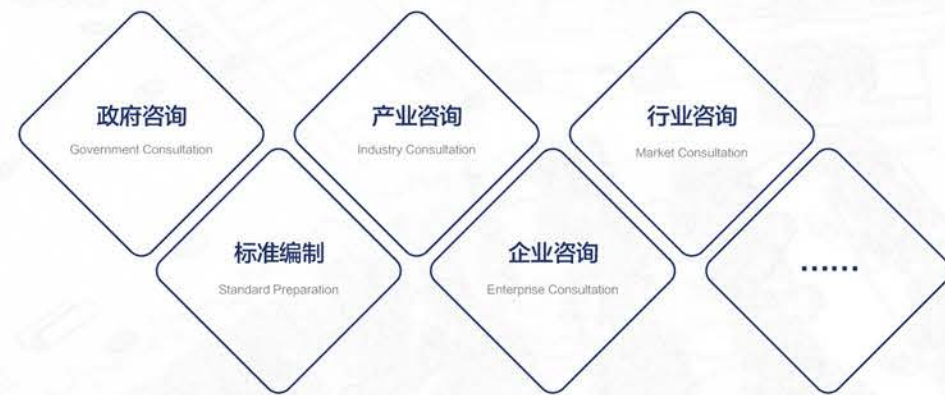
政策咨询

POLICY
CONSULTATION

受政府部门、行业协会及企事业单位的委托，依靠产学研合作平台，以专业、前沿、全面的分析研究，为业主提供行业发展规划、政策咨询、企业培训等服务。

TJEC has undertaken entrustments from government departments, industry associations, enterprises and institutions. With the production-study-research platform, TJEC has offered clients development plan of industries, policy consultation, corporate training, etc. in a professional, leading and comprehensive analysis.

服务内容涵盖 Service Contents



法律法规及行业规范标准 | Laws and Regulations

- 《建筑法》修订
- 《建设工程项目管理服务大纲和指南》
- 《全过程工程咨询服务合同示范文本》
- 《房屋建筑和市政基础设施建设项目全过程工程咨询服务技术标准》
- 《建设项目全过程工程咨询管理标准》
- 《装配式建筑工程总承包管理标准》
- 《市政基础设施工程全过程工程咨询指南》
- 《建设工程监理规范》(GB50319-2013)
- 《建筑工程咨询分类标准》(GB/T50852-2013)
- 《建筑工程分类标准》(GB/T50841-2013)
- 《国际工程风险评估技术规范》(TG/CCMSA 001-2016)
- 《建筑市场主体信用评价标准》(TG/CCMSA 002-2016)
-

- Revision of Construction Law
- Guidelines of Construction Engineering Project Management
- Model Text of the Whole-process Engineering Consulting Service Contract
- Technical Standard for Whole-process Engineering Consulting Services for Housing Construction and Municipal Infrastructure Construction Projects
- Standard for Whole-process Engineering Consulting Management of Construction Projects
- Standard for General Contracting Management of Prefabricated Construction Projects
- Guide for Consultation on the Whole-process of Municipal Infrastructure Projects
- Code for Construction Project Supervision (GB50319-2013)
- Classification Standard for Construction Engineering Consulting (GB/T50852-2013)
- Construction Engineering Classification Standard (GB/T50841-2013)
- International Technical Specification for Engineering Risk Assessment (TG/CCMSA 001-2016)
- Credit Evaluation Standards for Construction Market Participants (TG/CCMSA 2002-2016)
-

课题 | Subjects

- 工程咨询行业统计指标体系研究
- 中国工程监理制度发展研究
- 诚信体系推进的总体规划与实施研究
- 上海市人防工程防护设备创新发展模式及路径研究
- 市政评估软件的开发推动评估管理模式的创新发展
- 中国（上海）自由贸易试验区背景下公司发展机遇分析
- 基于BIM的全过程项目管理咨询服务模式研究
- 绿色建筑咨询业务拓展
- 工程质量责任保险
- 探索政府购买服务业务新路径—以轨道交通为例
- 上海市电子招标文件数据标准编写及招标文件编制工具开发
- 无人机应用业务拓展
-

- Research on Statistical Index System of Engineering Consulting Industry
- Research on the Development of Engineering Supervision System in China
- Research on the Overall Planning and Implementation of Credit System Promotion
- Research on Innovation Development Mode and Path of Shanghai Civil Air Defense Engineering Protection Equipment Industry
- The Development of Municipal Evaluation Software Promotes the Innovative Development of Evaluation Management Mode
- Analysis of Company Development Opportunities Under the Background of China (Shanghai) Pilot Free Trade Zone
- Research on the Whole-process Project Management Consulting Service Model Based on BIM
- Green Building Consulting Business Expansion
- Engineering Quality Liability Insurance
- Explore New Ways for Government to Purchase Service Business - Take Rail Transit As an Example
- Shanghai Electronic Bidding Document Data Standard Compilation and Development of Bidding Document Compilation Tools
- Uav Application Business Expansion
-

著作、教材 | Books and Teaching Materials

- 《全过程工程咨询实践指南》
- 《工程咨询方法与实务》
- 《PPP项目全流程操作手册》
- 《工程项目管理理论与实务》
- 《环境咨询实务与案例》
- 《人与自然的和解—以乌梁素海为例的山水林田湖草沙生态保护修复试点工程技术指南》
- 《交通建设工程施工企业安全生产管理实务》
- 《全国一级建造师执业资格考试用书》
- 《全国监理工程师职业资格考试用书》
- 《二级注册建造师继续教育教材》
-

- Practice Guide for Whole-process Engineering Consulting
- Engineering Consulting Methods and Practices
- Operation Manual of the Whole-process of PPP Project
- Engineering Project Management Theory and Practice
- Environmental Consulting Practice and Cases
- Reconciliation Between Man and Nature A Technical Guide for the Pilot Project of Ecological Protection and Restoration of Mountains, Rivers, Forests, Fields, Lakes and Sands, Taking Wuliangsu Hai As an Example
- Practice of Safety Production Management in Traffic Construction Enterprises
- Certificate for National Qualification Examination for First-level Constructors
- National Professional Qualification Examination for Supervisory Engineers
- Continuing Education Materials for Registered Constructors II
-

企业文化

ENTERPRISE CULTURE

以客户的满意
员工的自我实现
社会的进步为最大价值所在

Customer's Satisfaction
Employee's Self-Fulfillment
Social Progress are Greatest Values that TJEC Has Tried to Achieve

合作交流

Cooperation and Communication

同济咨询广泛参与行业内的多项合作交流，不断学习引进先进的管理理念，积极拓展产学研合作平台，探索更具个性化及专业化的工程咨询服务模式，推动中国现代工程咨询业的发展。

TJEC has devoted to exploring more personalized and professional engineering consulting modes, and promoting the development of modern engineering consulting service. In order to study advanced management concept and expand the production-study-research cooperation platform, TJEC has involved in numerous intra-industry cooperation and communication extensively.



成立“工程咨询产业链驱动型”众创空间
Setting Up the "Engineering Consulting Industry Chain Driven" Space



成立数字化城镇管理研究院
Establishing Digital Town Management Research Institute



出席建设工程全过程咨询探索与实践论坛
Co-organized Shanghai International Project Management Forum



与同济大学各院系产学研合作
Cooperatwith Various Departments of Tongji University

团队建设 Group Activities

公司遵循“以人为本”的管理理念，注重培养兼具使命感、责任感和创新性的企业团队，倡导团结互助、热情真诚的工作氛围，加强内部党团、员工培训、工会组织建设，多措并举，积极推进企业文化延展。

TJEC has followed a people-oriented management concept and paid attention to cultivate a work team filling with mission, responsibility and innovation, and advocated a cultural atmosphere dominating by unity, cooperation, enthusiasm and sincerity. Besides, TJEC has strengthened construction of Party Branch and Trade Union, promoting the extension of enterprise cultivating greatly.



举办全过程工程咨询服务产业链平台环经济技术资源对接会
Holding the Whole-process Engineering Consulting Platform of Tongji Technology Resources Matchmaking Meeting



参与起草住建部《全过程工程咨询服务合同示范文本》并组织专家研讨会
Participating in drafting the Model Text of whole-process Engineering Consulting Service Contract of the Ministry of Housing and Urban-rural Development and Organized Expert Seminars

党团活动 Group Activities



“五一”、“五四”团建植树活动
May Day and May Fourth Group Tree-planting Activities



三地联跑搭新桥
Collective Running

员工培训 Employee Training



新员工培训交流活动
Activities for New Employees



项目经理综合能力提升培训班
Training Class for Project Managers

工会活动 Union Activity



妇女节DIY活动
DIY Activities on Women's Day



端午节包粽子
Making Zongzi on Dragon Boat Festival



荣获上海建设监理行业发展三十周年行业贡献奖
Shanghai Construction Supervision Industry Contribution Award for the 30th Anniversary of Its Development



参加中国工程咨询协会理事会
Participating the Council of China Engineering Consulting Association

社会责任

Social Responsibility

同济咨询在履行企业义务的同时，长期投身于工程援建、抗震救灾、奖学金资助、优秀大学生实习基地、环保公益等各类社会工作，积极承担社会责任，服务社会发展。

TJEC has been keen on all kinds of social works such as earthquake relief, construction assistance, scholarship funds, public benefit etc., and spared no effort to serve the society.



西藏亚东县上亚东乡灾后援建

Post-disaster Reconstruction in Shangyadong Township, Yadong County, Xizang Province



“万企帮万村”精准扶贫行动-云南省金平县帮扶活动

Poverty Alleviation in Yunnan



设立同济咨询奖学(教)金

Tongji Consulting Scholarship (teaching) Fund



助力同济大学勇往「职」前求职大赛

Career Competition

传承百年同济·追求卓越创新

Inheriting Centennial Tongji University, Pursuing Excellence and Innovation